

DISTRICT 10 ACCESSIBILITY AND CONNECTIVITY STUDY
VARIOUS COUNTIES
KYTC ITEM NO. N/A

APPENDIX A – COUNTY MEETING SUMMARIES

Meeting Minutes

TO: Mikael Pelfrey
Co-Project Manager
KYTC Central Office
200 Mero Street
Frankfort, KY 40622

Jason Blackburn
Co-Project Manager
KYTC District Office #10
473 Highway 15 South
Jackson, KY 41339

FROM: Brian Aldridge
Project Manager
Stantec Consulting Services Inc.

DATE: July 21, 2017

SUBJECT: KYTC District 10 Accessibility & Connectivity Study
District 10 Counties
KYTC Item No. N/A
Menifee County Meeting

In support of the KYTC District 10 Accessibility and Connectivity Study, a meeting with Menifee County officials was held at the Gateway Area Development District (GADD) office in Morehead, KY on July 10, 2017 at 1:00 p.m. EDT. The following individuals were in attendance:

Jason Blackburn	KYTC – District 10
Joshua Farrow	Gateway Area Development District
Mikael Pelfrey	KYTC – Central Office Planning
Rick Stiltner	Menifee County Judge Executive
Larry Tackett	Gateway Area Development District
Gail Wright	Gateway Area Development District
Gary Sharpe	Palmer Engineering
Brian Aldridge	Stantec Consulting Services Inc.
Steve Farmer	Stantec Consulting Services Inc.
Len Harper	Stantec Consulting Services Inc.

Jason Blackburn welcomed everyone and said the purpose of the meeting was to discuss the state of transportation in Menifee County with specific focus on residents' current travel patterns and needs. Menifee County was selected as an initial "pilot" meeting for the study. The goal of the meeting is to solicit input on potential growth areas and to determine local issues and transportation obstacles that may hinder travel. Handouts included a meeting agenda and a project study area map. An exhibit board of Menifee County and its buffer counties, shown in **Figure 1**, was also displayed showing the existing roadway network, cities, hospitals, universities, etc.

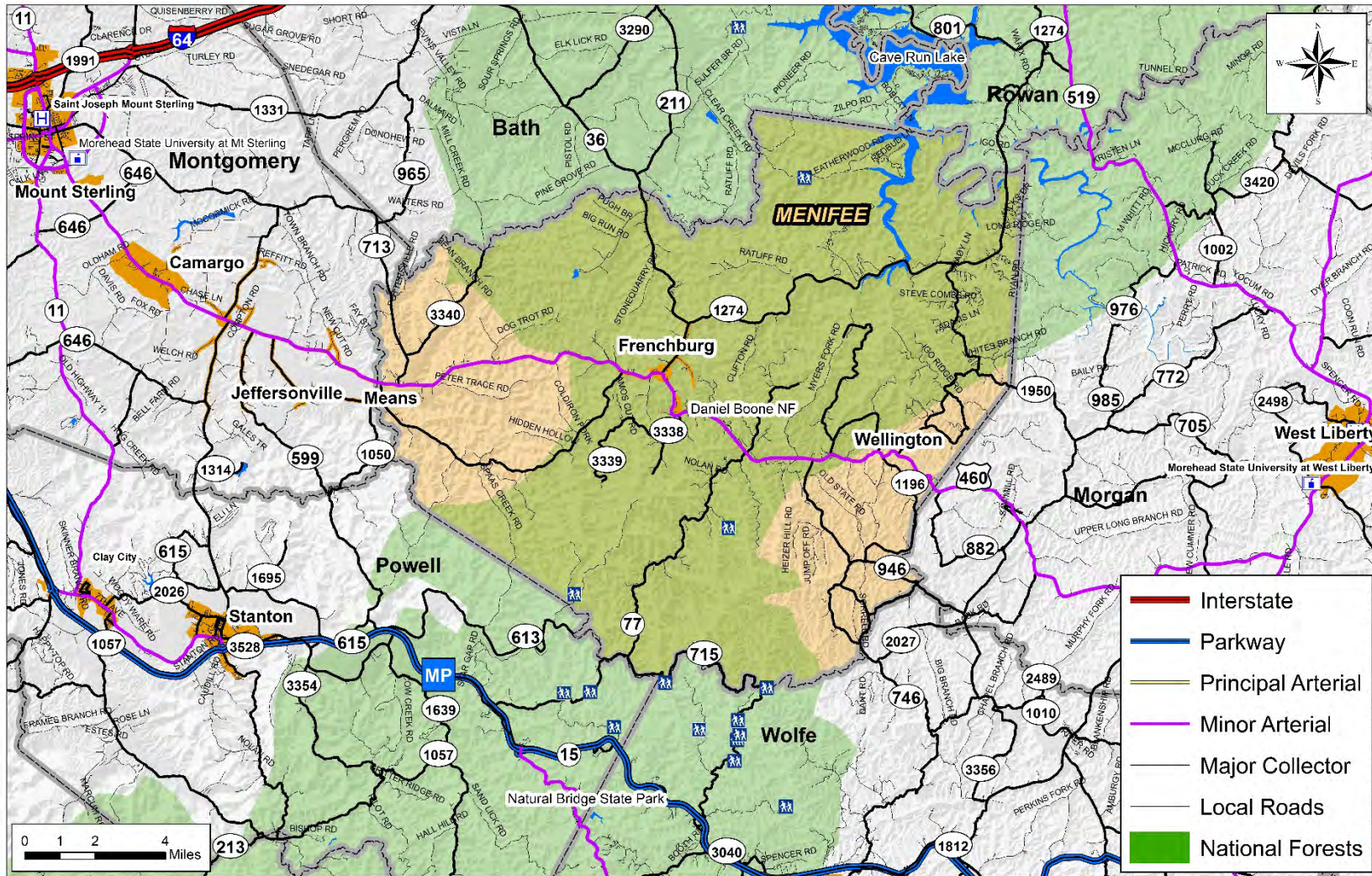


Figure 1: Menifee County Exhibit Board

After introductions, Brian Aldridge led a group discussion. He noted the focus of the meeting was not to identify potential projects but to talk about the issues and concerns for the county. The discussion was to focus on answering big picture questions, such as, “What are the obstacles, constraints, and opportunities for growth in Menifee County?” Ultimately, the project team will draw from these issues and concerns to identify the need for and scope of potential transportation improvements within District 10 and neighboring areas. The emphasis is to improve safety, connectivity, and mobility at a regional level. The following questions were discussed during the meeting.

1. Where are Menifee County residents going for jobs, healthcare, shopping, recreation, etc.?
 - Mt. Sterling in Montgomery County and Morehead in Rowan County are where most Menifee County residents go for jobs, shopping, and healthcare.
 - Approximately 20 residents travel to the Eastern Kentucky Correctional Complex in West Liberty for work. Outside of that very few travel to West Liberty for jobs, shopping, and healthcare.
 - Morehead State University no longer has campuses in Mt. Sterling or West Liberty.
 - Residents living in Wellington do not have good north/south roadway connectivity to the Mountain Parkway or I-64. There is a Dollar General Store in Wellington that is a popular shopping destination for area residents.
 - A number of residents travel to Toyota in Georgetown for work.
 - A number of eastern Kentucky residents have a second home in Menifee County. They stay in Menifee County during the week to lessen their drive to work in Lexington or Georgetown and then travel back home on the weekends.

2. Where is the job growth, if any, occurring in Menifee County? A map from Kentucky’s Statewide Travel Demand Model (KYSTM) showing the projected change in employment between 2017 and 2040 was presented to help with the group exercise. It was noted that these projections come from Woods & Poole Economics. A good discussion was held on how this model is formulated. The map is shown in **Figure 2** and includes changes (boxed in yellow) recommended by Judge Stiltner and the Gateway Area Development District (GADD).
 - Tourism has the largest potential for economic growth. 42 percent of the county is owned by the United States Forest Service (USFS). The Red River Gorge and Cave Run Lake are the top attractions.
 - A lot of the attractions for the Red River Gorge are in Menifee County but tourists have to go to adjacent counties for lodging, restaurants, and gas stations because of the lack of amenities in Menifee County. Menifee County is responsible for maintaining public services (roads, police, search and rescue, etc.) but tourists spend their money in other counties.

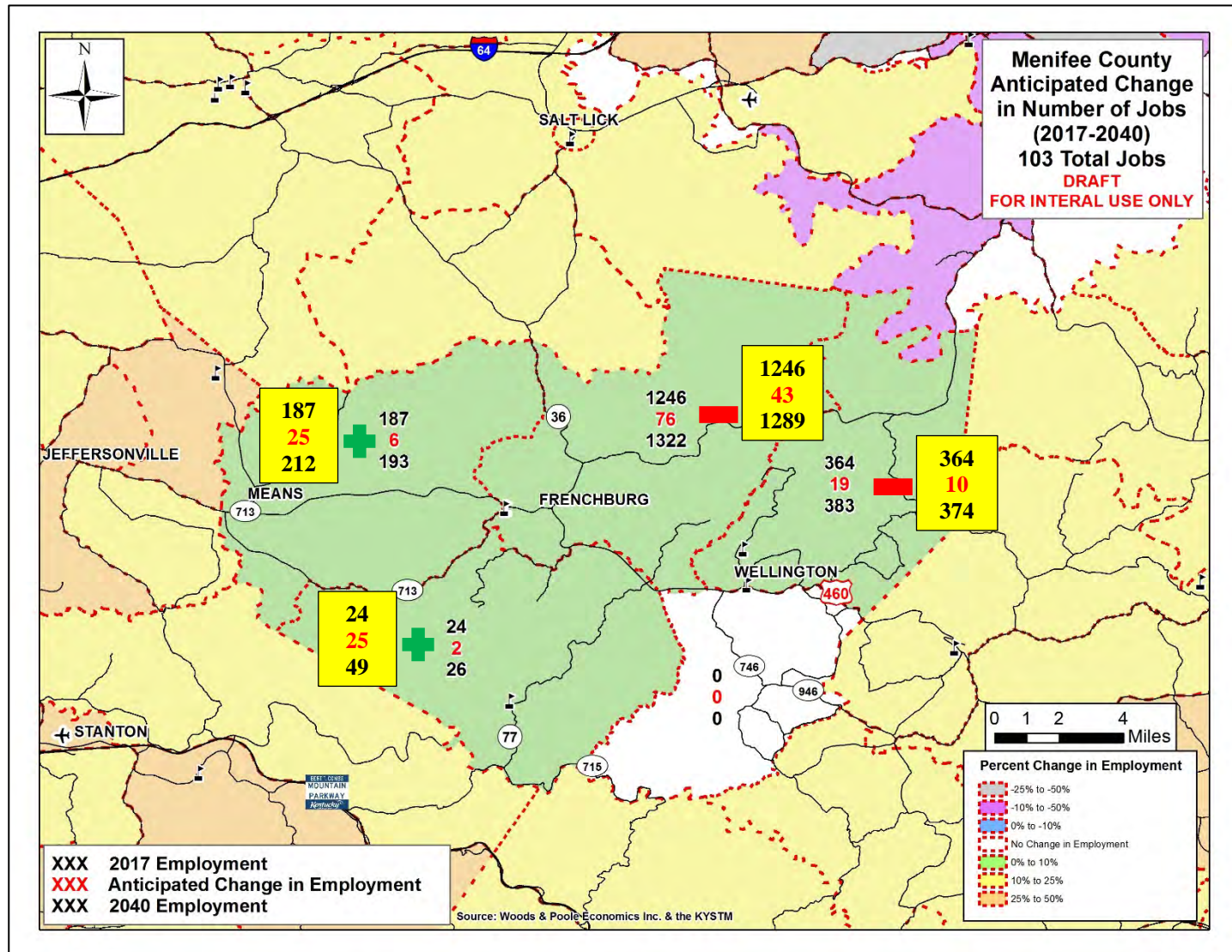


Figure 2: Menifee County Anticipated Change in Number of Jobs (2017-2040)

- County officials are working with the USFS to allow more development in Menifee County to take advantage of the tourism at the Red River Gorge. Menifee County is working on a Tourism and Marketing Study which will be complete sometime in Fall 2017. The study will be used to determine where development is most warranted and help facilitate development discussions with the USFS. As a start Judge Stiltner would like to see a campsite, convenient store, and gas station along KY 77. The GADD will provide Stantec with a copy of the Tourism and Marketing Study when it is complete.
 - The Frenchburg Job Corps Center on KY 77 employs 50-60 people. Job Corps is a no-cost education and career technical training program administered by the U.S. Department of Labor that helps young people ages 16 to 24 improve the quality of their lives through career technical and academic training. The Small Wood Lumber Company is also located on KY 77 and currently employs 75-100 people. These two major employers along with the anticipated addition of tourism related jobs are expected to add 25 jobs by 2040 in transportation analysis zone (TAZ) 4083041, as shown the red bubble cloud in **Figure 2**.
 - There are several manufactures along US 460 near the Menifee/Montgomery County line in Means, including three Boneal Incorporated facilities. The land is relatively flat in this area and water and sewer are available. There is also farm land along KY 36 near the Menifee/Bath County line that is prime for development, especially if KY 36 is improved. The existing employers along with the anticipated addition of new employers are expected to add 25 jobs by 2040 in the TAZ 4083011, as shown in the red bubble cloud in **Figure 2**.
 - Judge Stiltner would eventually like to see a call center in Frenchburg. Mountain Telephone provides excellent telecommunications services including high speed internet.
 - The GADD is updating their Comprehensive Economic Development Strategy (CEDS). The study should be complete in Fall 2017. The GADD will provide Stantec with a copy of the study when it is finished.
 - A new Menifee County PK-8 School with a 750-student capacity is being built off US 460 near Pear Tree Way. The new school is in the same TAZ as the existing elementary and middle school it is replacing.
3. Where is Menifee County growing? A map from KYSTM showing the change in population projections between 2017 and 2040 were presented to help with the group exercise. It was noted that these projections come from the Kentucky State Data Center. The map is shown in **Figure 3** including changes recommended by Judge Stiltner and GADD which are circled in a red bubble cloud. The county wide total population projections will match the Kentucky State Data Center projections but the distribution of the population within the county and the TAZ's may be revised based on the local input provided below.

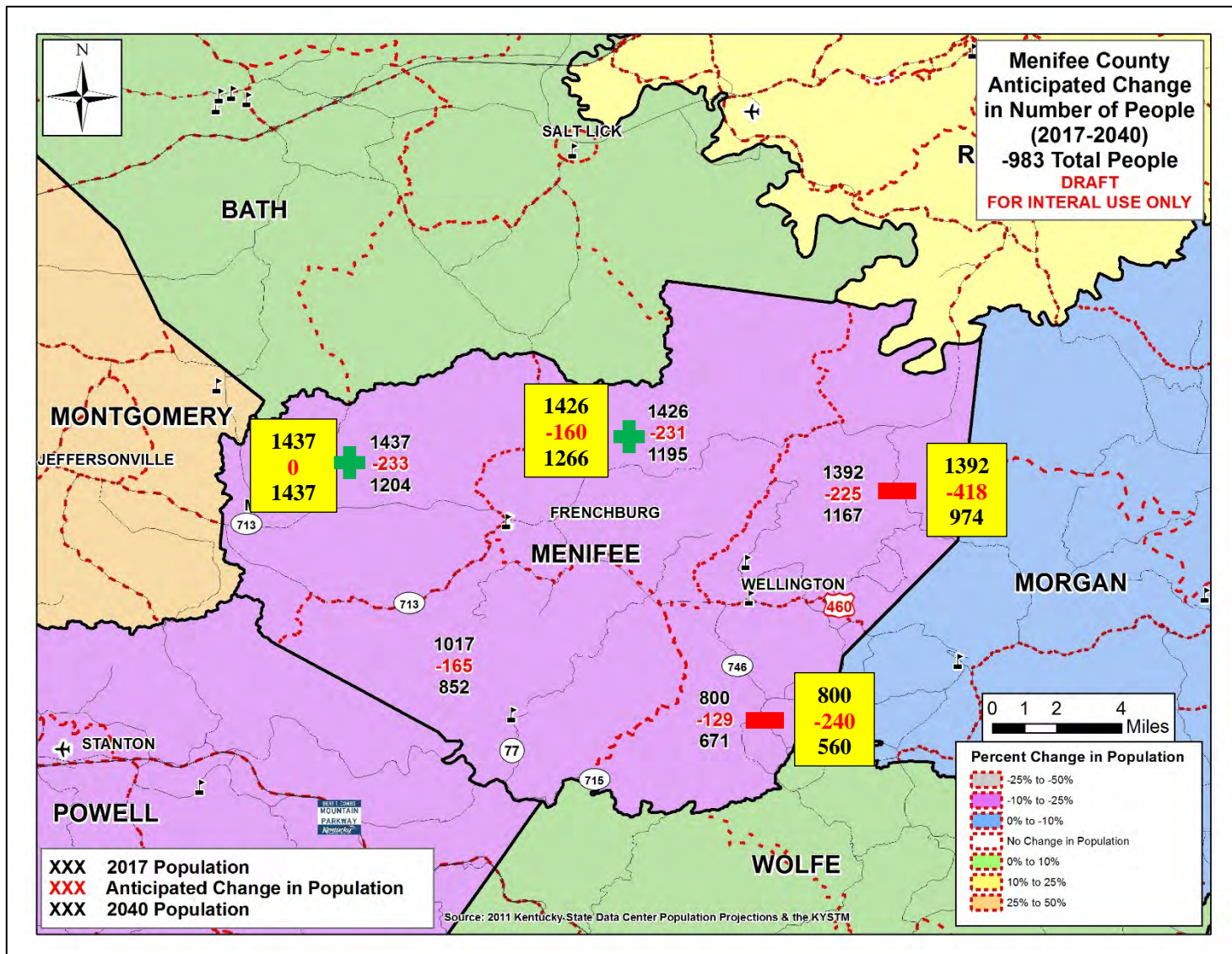


Figure 3: Menifee County Anticipated Change in Number of People (2017-2040)

- Two reasons why people move to Menifee County are for the low property tax rates or because the county is exempt from the Welfare to Work Program Requirements. There are also a number of eastern Kentucky residents who have a second home in Menifee County. They stay in Menifee County during the week to lessen their drive to work or they own a cabin for Cave Run Lake.
 - The population projections for Means and Frenchburg are expected remain relatively flat between 2017 and 2040. These two areas have utility infrastructure, government related jobs, and flat land for development. Their proximity to Mt. Sterling and I-64 is also good. KY 36 near the Menifee/Bath County line has potential development opportunities for Cave Run Lake users, especially if KY 36 is improved.
 - Southeastern Menifee County is expected to see a steeper decline as the population ages. This exiting roadway network makes this area tough to access and the existing water and sewer infrastructure is limited.
4. What transportation issues are preventing people from getting where they want to go and preventing the county from growing?
- A need for improved access to Mt. Sterling and I-64 (primarily for westbound travel) in Montgomery County as there is congestion on US 460 traveling between Menifee County and I-64. This would be the county's top priority.
 - Improved access to US 60, Morehead, and I-64 (primarily for eastbound travel) in Bath and Rowan Counties: Geometrics and roadway/shoulder widths on KY 36 and KY 211 traveling between Menifee County and US 60. This is the county's second priority.
 - Improved access for Wellington residents to and from Morehead in Rowan County. Concerns generally include geometrics and roadway/shoulder widths on KY 1274.
 - Improved access to Mountain Parkway in Powell County. Concerns generally include geometrics and roadway/shoulder widths on KY 77.
5. Brian ended the meeting with a discussion of the project schedule and next steps. The next step will be for the project team to have similar meetings with the remaining District 10 Counties. The study process and results will then be presented for feedback to all District 10 Counties at a final "wrap-up" meeting in Spring 2018. The final report will be published in Summer 2018.

The meeting ended at approximately 2:00 p.m. EDT.

Meeting Minutes

TO: Mikael Pelfrey
Co-Project Manager
KYTC Central Office
200 Mero Street
Frankfort, KY 40622

Jason Blackburn
Co-Project Manager
KYTC District Office #10
473 Highway 15 South
Jackson, KY 41339

FROM: Brian Aldridge
Project Manager
Stantec Consulting Services Inc.

DATE: August 29, 2017

SUBJECT: KYTC District 10 Accessibility & Connectivity Study
District 10 Counties
KYTC Item No. N/A
Morgan County Meeting

In support of the KYTC District 10 Accessibility and Connectivity Study, a meeting with Morgan County officials was held at the Commercial Bank training room in West Liberty, KY on August 11, 2017 at 10:00 a.m. EDT. The following individuals were in attendance:

Jason Blackburn	KYTC – District 10
Joshua Farrow	Gateway Area Development District
Stanley Franklin	Morgan County Judge Executive
Mark Walter	Mayor-West Liberty
Brian Aldridge	Stantec Consulting Services Inc.
Steve Farmer	Stantec Consulting Services Inc.

Brian Aldridge welcomed everyone and said the purpose of the meeting was to discuss the state of transportation in Morgan County with specific focus on residents' current travel patterns and needs. The goal of the meeting is to solicit input on potential growth areas and to determine local issues and transportation obstacles that may hinder travel. Handouts included a meeting agenda and a project study area map. An exhibit board of Morgan County and its buffer counties, shown in **Figure 1**, was also displayed showing the existing roadway network, cities, hospitals, universities, etc.

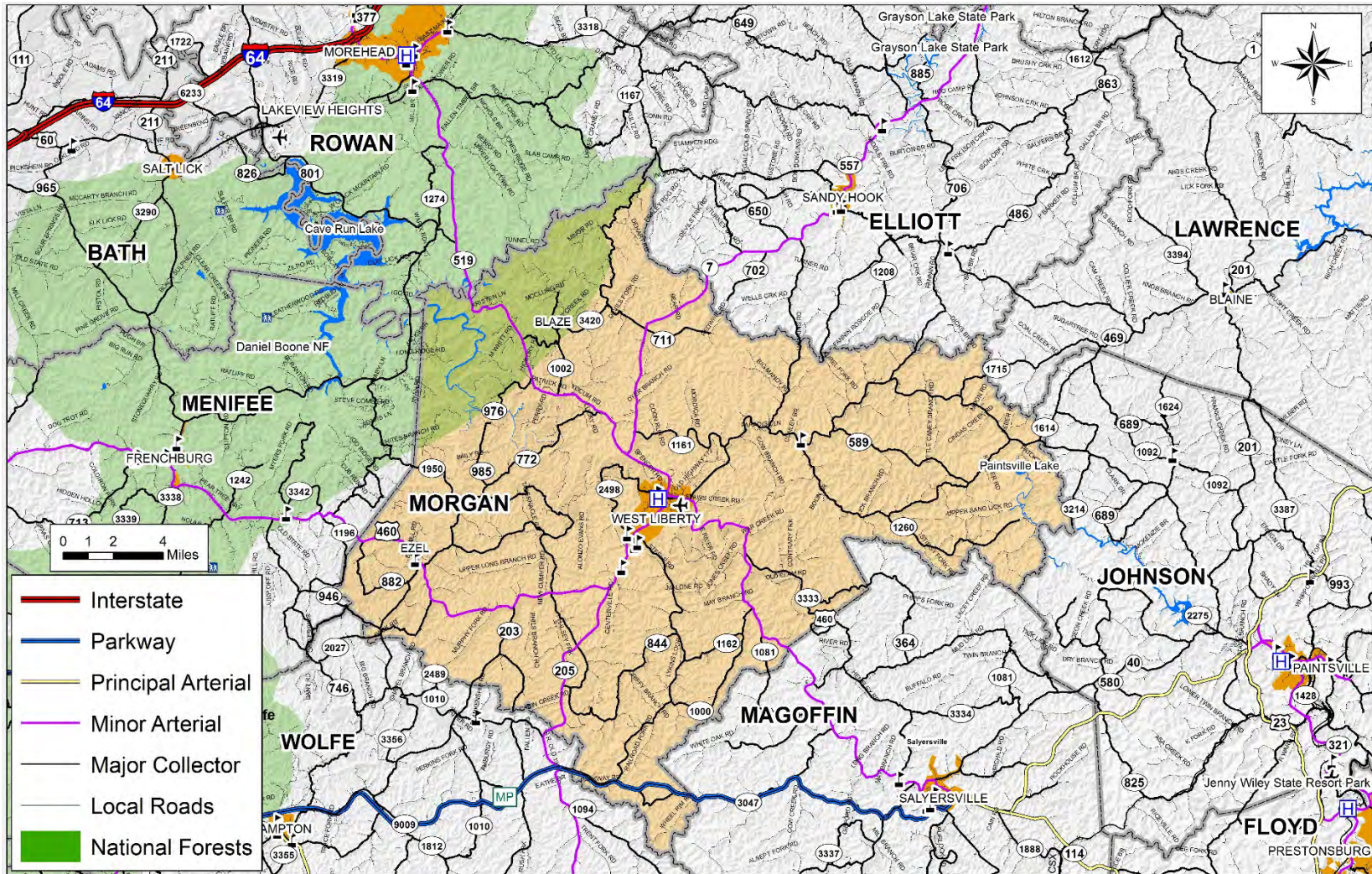


Figure 1: Morgan County Exhibit Board

After introductions, Brian Aldridge led a group discussion. He noted the focus of the meeting was not to identify potential projects but to talk about the issues and concerns for the county. The discussion was to focus on answering big picture questions, such as, “What are the obstacles, constraints, and opportunities for growth in Morgan County?” Ultimately, the project team will draw from these issues and concerns to identify the need for and scope of potential transportation improvements within District 10 and neighboring areas. The emphasis is to improve safety, connectivity, and mobility at a regional level. The following questions were discussed during the meeting.

1. Where are Morgan County residents going for jobs, healthcare, shopping, recreation, etc.?
 - Mt. Sterling in Montgomery County, Morehead in Rowan County, Georgetown in Scott County, and Sandy Hook in Elliott County are where most Morgan County residents go for jobs.
 - Mt. Sterling, Morehead, and Paintsville in Johnson County are where most Morgan County residents go for recreation and shopping. There is a Dollar General Store in Ezel that is a popular destination.
 - Morehead, Paintsville, Hazard in Perry County, Ashland in Boyd County, and Pikeville in Pike County are where most Morgan County residents go for healthcare.

2. Where is the job growth, if any, occurring in Morgan County? A map from Kentucky’s Statewide Travel Demand Model (KYSTM) showing the projected change in employment between 2017 and 2040 was presented to help with the group exercise. It was noted that these projections come from Woods & Poole Economics. A good discussion was held on how this model is formulated. The map is shown in **Figure 2**.
 - The primary employers in Morgan County are the school system, Appalachian Regional Healthcare, the Eastern Kentucky Correctional Complex, and a few factories.
 - There was some optimism for job growth on KY 205 near Wolfe County and on US 460 in the Ezel area but the job growth shown in the map cannot be easily justified. It was decided that the projections would be left as is.

3. Where is Morgan County growing? A map from the KYSTM showing the change in population projections between 2017 and 2040 were presented to help with the group exercise. It was noted that these projections come from the Kentucky State Data Center and show the county’s population decreasing by 686 people by 2040. The map is shown in **Figure 3**.
 - Judge Franklin and Mayor Walter stated that the people purchasing property in Morgan County were mostly retirees looking for a place to go hunt and get away. It was decided that the projections would be left as is.

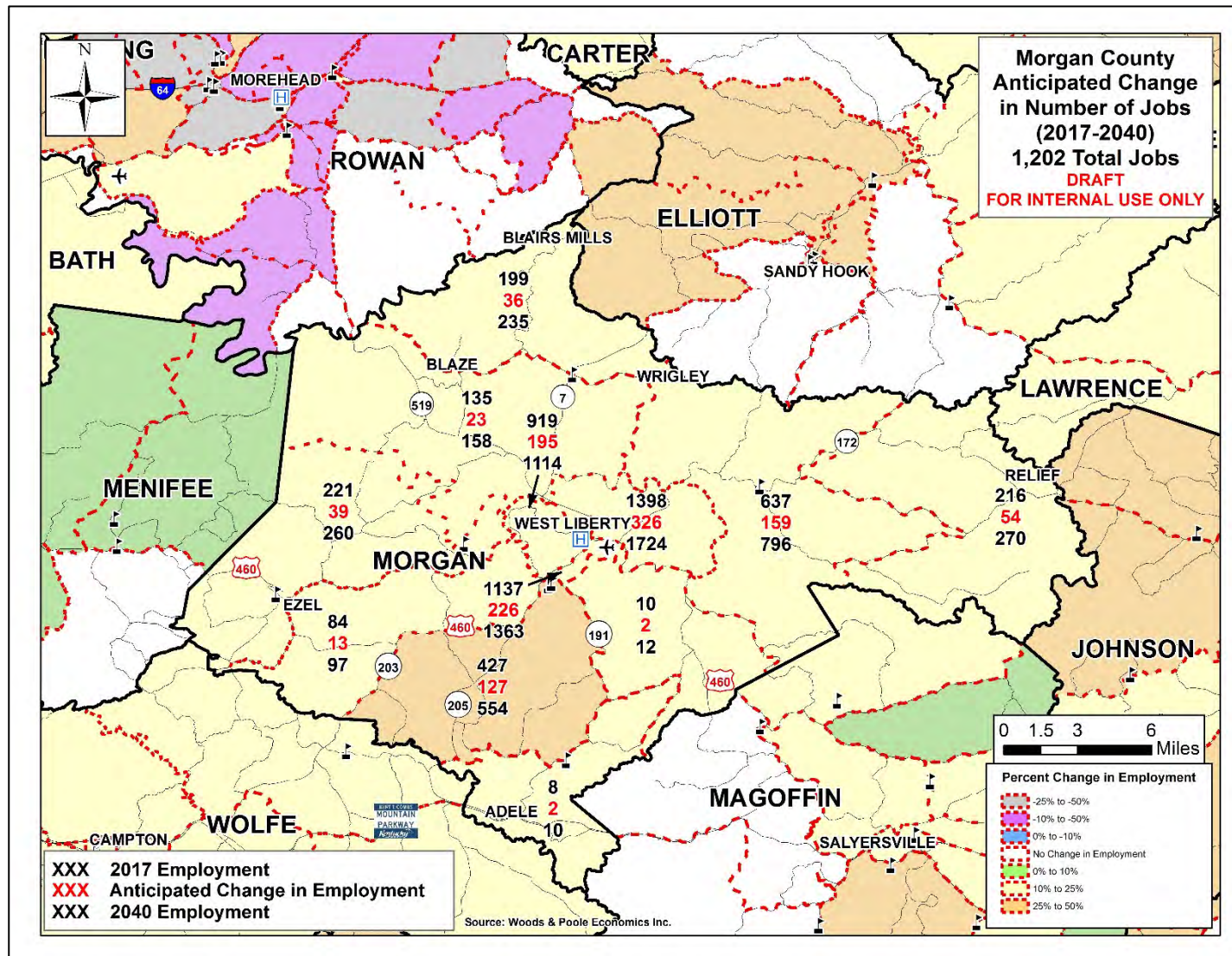


Figure 2: Morgan County Anticipated Change in Number of Jobs (2017-2040)

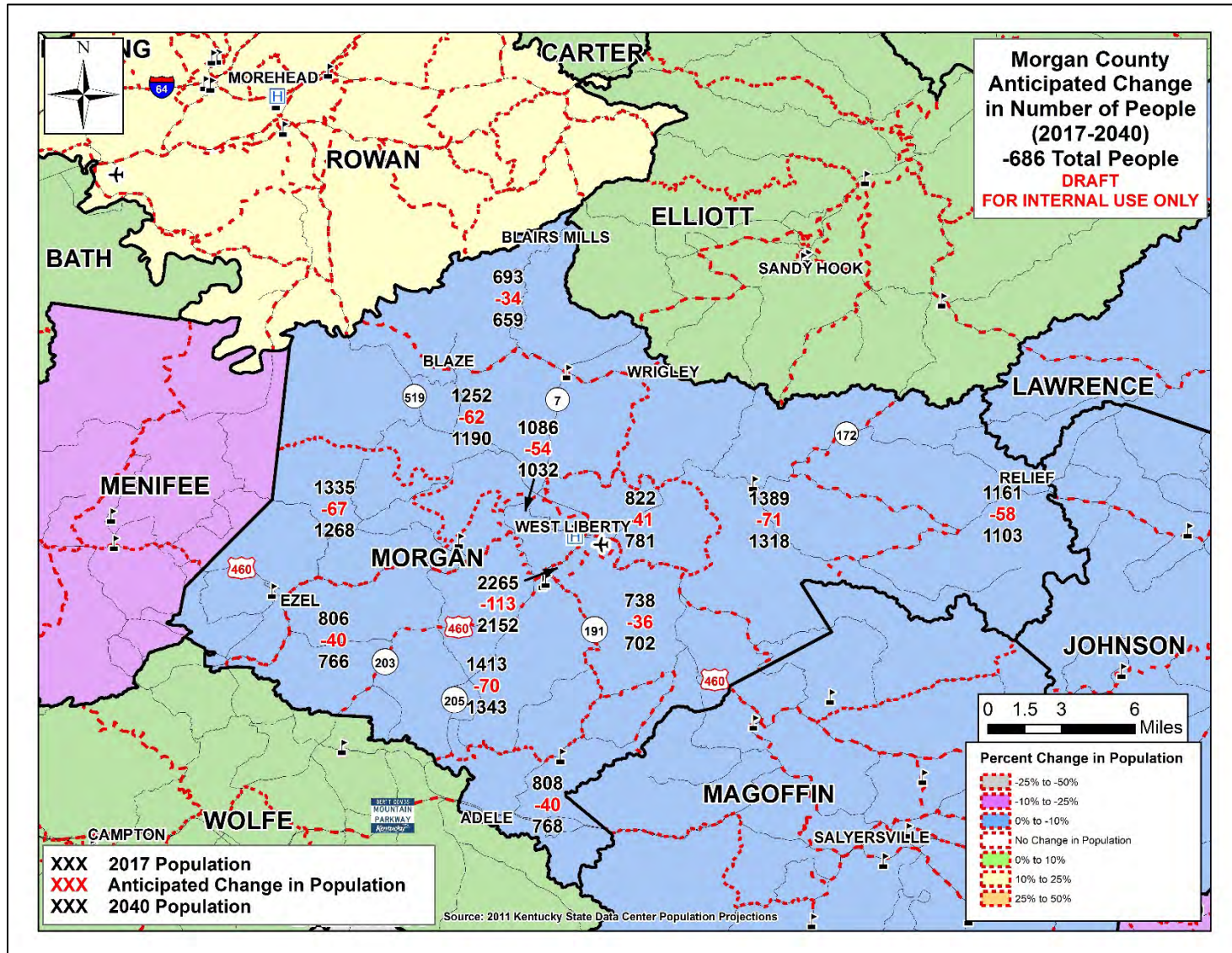


Figure 3: Morgan County Anticipated Change in Number of People (2017-2040)

4. What transportation issues are preventing people from getting where they want to go and preventing the county from growing?
 - A need for improved access to I-64 and the Mountain Parkway was the main point of focus.
 - For the most part, roadways in Morgan County are in good shape. However, travel to the aforementioned highways is hampered by the need for improvements in other counties. US 460 in Menifee and Magoffin Counties, KY 172 in Johnson County, and KY 203 in Wolfe County were cited.
5. Brian and Jason Blackburn ended the meeting with a discussion of the project schedule and next steps. The next step will be for the project team to have similar meetings with the remaining District 10 counties. The study process and results will then be presented for feedback to all District 10 Counties at a final “wrap-up” meeting in Spring 2018. The final report will be published in Summer 2018.

The meeting ended at approximately 11:15 a.m. EDT.

Meeting Minutes

TO: Mikael Pelfrey
Co-Project Manager
KYTC Central Office
200 Mero Street
Frankfort, KY 40622

Jason Blackburn
Co-Project Manager
KYTC District Office #10
473 Highway 15 South
Jackson, KY 41339

FROM: Brian Aldridge
Project Manager
Stantec Consulting Services Inc.

DATE: September 5, 2017

SUBJECT: KYTC District 10 Accessibility & Connectivity Study
District 10 Counties
KYTC Item No. N/A
Wolfe County Meeting

In support of the KYTC District 10 Accessibility and Connectivity Study, a meeting with Wolfe County officials was held at the KYTC District 10 conference room in Jackson, KY on August 21, 2017 at 9:00 a.m. EDT. The following individuals were in attendance:

Brian Aldridge	Stantec Consulting Services Inc.
Jason Blackburn	KYTC – District 10
Dennis Brooks	Wolfe County Judge Executive
Len Harper	Stantec Consulting Services Inc.
Eunice Holland	KY River Area Development District

Brian Aldridge welcomed everyone and said the purpose of the meeting was to discuss the state of transportation in Wolfe County with specific focus on residents' current travel patterns and needs. The goal of the meeting is to solicit input on potential growth areas and to determine local issues and transportation obstacles that may hinder travel. Handouts included a meeting agenda and a project study area map. An exhibit board of Wolfe County and its buffer counties, shown in **Figure 1**, was also displayed showing the existing roadway network, cities, hospitals, universities, etc.

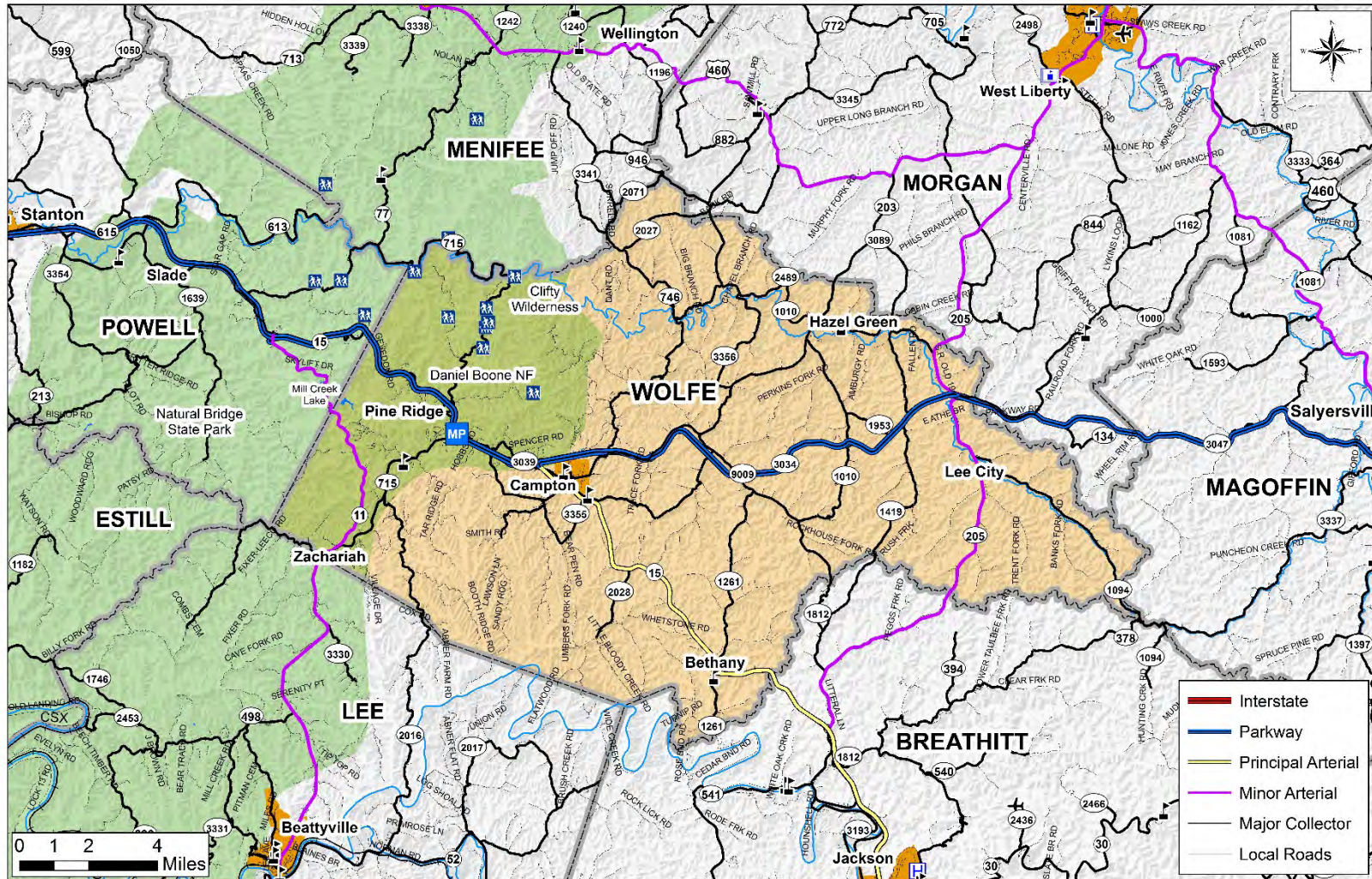


Figure 1: Wolfe County Exhibit Board

After introductions, Brian Aldridge led a group discussion. He noted the focus of the meeting was not to identify potential projects but to talk about the issues and concerns for the county. The discussion was to focus on answering big picture questions, such as, “What are the obstacles, constraints, and opportunities for growth in Wolfe County?” Ultimately, the project team will draw from these issues and concerns to identify the need for and scope of potential transportation improvements within District 10 and neighboring areas. The emphasis is to improve safety, connectivity, and mobility at a regional level. The following questions were discussed during the meeting.

1. Where are Wolfe County residents going for jobs, healthcare, shopping, recreation, etc.?
 - Mt. Sterling in Montgomery County, Jackson in Breathitt County, Winchester in Clark County, Lexington in Fayette County, and Richmond in Madison County are where most Wolfe County residents go for jobs.
 - Jackson in Breathitt County, Stanton and Clay City in Powell County, Winchester in Clark County, Lexington in Fayette County, and Richmond in Madison County are where most Wolfe County residents go for shopping and recreation. The Walmart in Jackson, the Kroger in Stanton and the Walmart and Kohls in Winchester are popular destinations. The Save-A-Lot in Campton is a popular local destination.
 - The Wolfe County Health Center in Campton, the Kentucky River Medical Center in Jackson, and the various medical facilities in Lexington are where most Wolfe County residents go for healthcare.

2. Where is the job growth, if any, occurring in Wolfe County? A map from Kentucky’s Statewide Travel Demand Model (KYSTM) showing the projected change in employment between 2017 and 2040 was presented to help with the group exercise. It was noted that these projections come from Woods & Poole Economics. The map is shown in **Figure 2** including changes (boxed in yellow) recommended by Judge Brooks and Eunice Holland from the Kentucky River Area Development District (KRADD).
 - Outside of farming, the primary employers in Wolfe County are the public school system and small businesses (Danny’s Welding Inc. and Dollar General in Campton, Chop Shop and Lion Distribution in Hazel Green, S&S Lumber Co. in Rogers).
 - There is optimism for job growth on the west side of the Wolfe County because of the proposed Hollerwood Park. Hollerwood Park is 2,500 acres of leased property near Red River Gorge and Natural Bridge State Park. Operated by a Multi-County Recreational Board made up of 12 representatives from Lee, Estill, Wolfe and Powell Counties (LEWP). Hollerwood Park is a multitude of 4WD, UTV, ATV, Motorcycle, Horseback, and Mountain Bike trails.

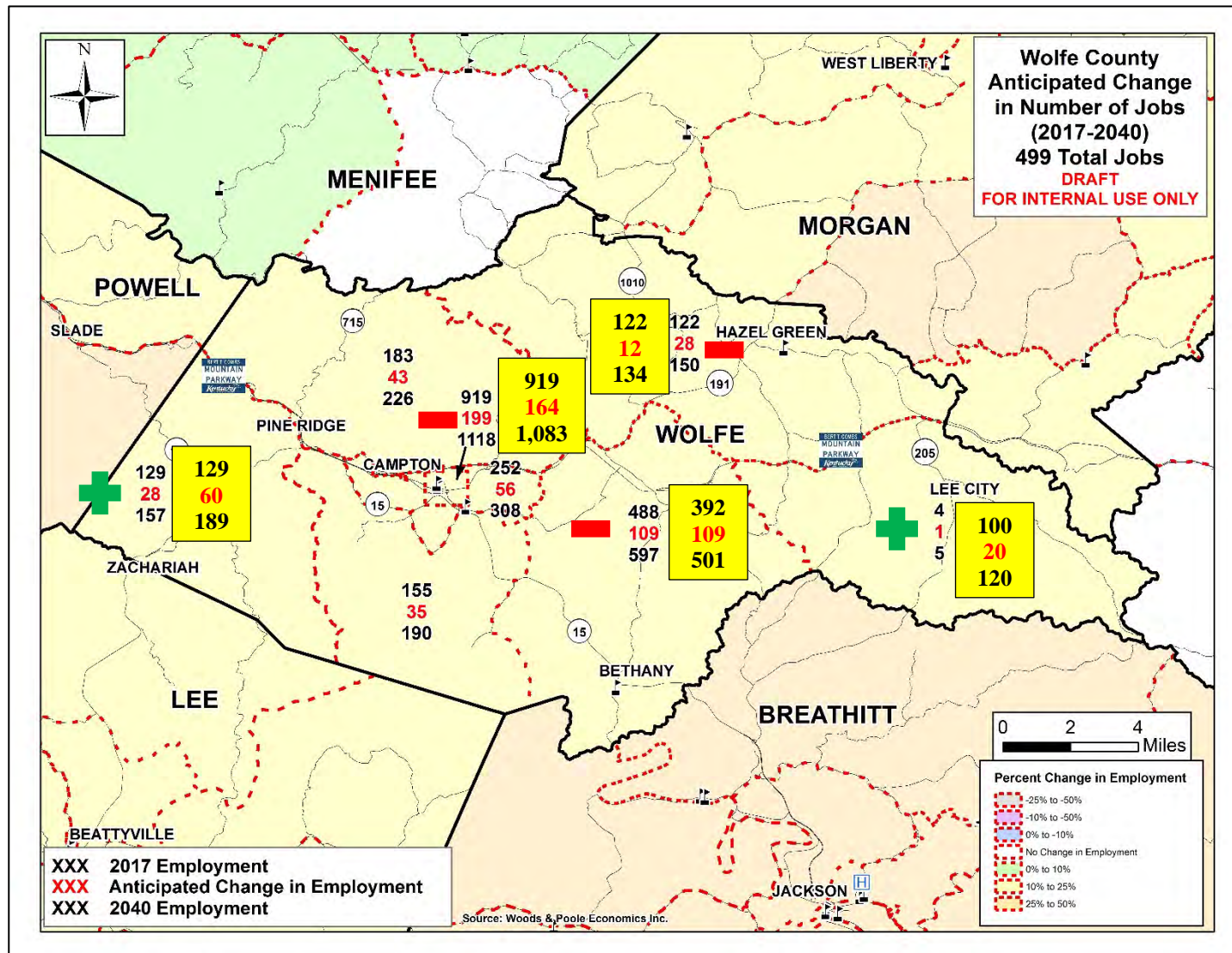


Figure 2: Wolfe County Anticipated Change in Number of Jobs (2017-2040)

- With all the existing employers in Lee City, that TAZ should show 100 jobs in 2017 with 20 additional jobs projected in 2017. The TAZ around Bethany is mostly farming and does not have 488 existing jobs. Move some of these jobs to the Lee City TAZ. 22 percent job growth is not expected in Hazel Green or Campton. It was decided that the projections in the remaining TAZs were reasonable and should be left as is.
3. Where is Wolfe County growing? A map from KYSTM showing the change in population projections between 2017 and 2040 were presented to help with the group exercise. It was noted that these projections come from the Kentucky State Data Center and show the county's population increasing by 284 people by 2040. The map is shown in **Figure 3**.
- It was decided that the population projections looked reasonable and should be left as is.

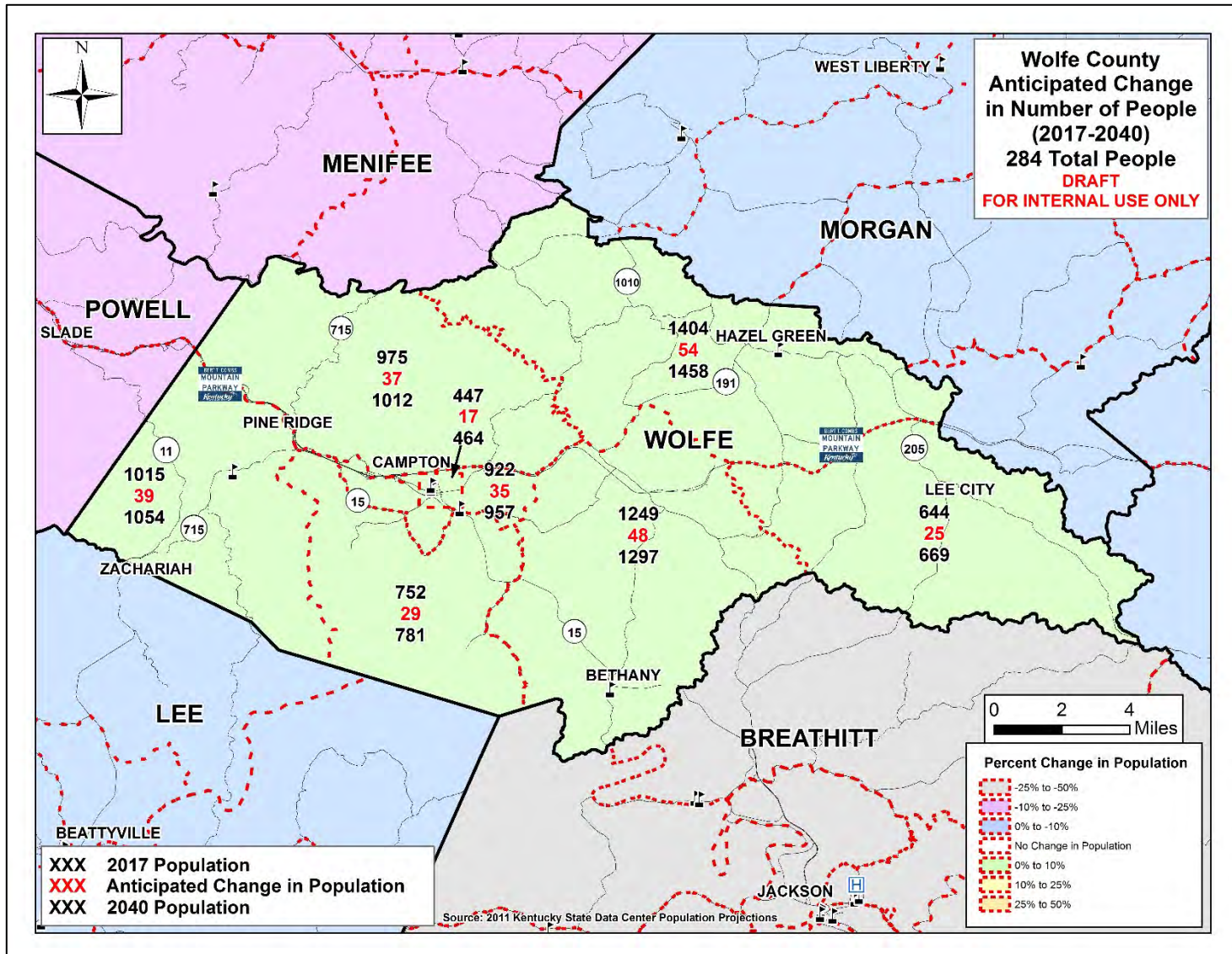


Figure 3: Wolfe County Anticipated Change in Number of People (2017-2040)

4. What transportation issues are preventing people from getting where they want to go and preventing the county from growing?
 - With the Mountain Parkway and recent improvements to KY 205, transportation issues are not preventing the county from growing.
 - The main concern industries have about moving to Wolfe County is the lack of a reliable drug-free workforce.

5. Brian and Jason Blackburn ended the meeting with a discussion of the project schedule and next steps. The next step will be for the project team to have similar meetings with the remaining District 10 counties. The study process and results will then be presented for feedback to all District 10 Counties at a final “wrap-up” meeting in Spring 2018. The final report will be published in Summer 2018.

The meeting ended at approximately 10:00 a.m. EDT.

Meeting Minutes

TO: Mikael Pelfrey
Co-Project Manager
KYTC Central Office
200 Mero Street
Frankfort, KY 40622

Jason Blackburn
Co-Project Manager
KYTC District Office #10
473 Highway 15 South
Jackson, KY 41339

FROM: Brian Aldridge
Project Manager
Stantec Consulting Services Inc.

DATE: September 8, 2017

SUBJECT: KYTC District 10 Accessibility & Connectivity Study
District 10 Counties
KYTC Item No. N/A
Owsley County Meeting

In support of the KYTC District 10 Accessibility and Connectivity Study, a meeting with Owsley County officials was held at the KYTC District 10 conference room in Jackson, KY on September 7, 2017 at 9:00 a.m. EDT. The following individuals were in attendance:

Brian Aldridge	Stantec Consulting Services Inc.
Jason Blackburn	KYTC – District 10
Eunice Holland	Kentucky River Area Development District
Len Harper	Stantec Consulting Services Inc.
Cale Turner	Owsley County Judge Executive

Jason Blackburn welcomed everyone and introductions were made. Len Harper stated the purpose of the meeting was to discuss the state of transportation in Owsley County with specific focus on residents' current travel patterns and needs. The goal of the meeting is to solicit input on potential growth areas and to determine local issues and transportation obstacles that may hinder travel. Handouts included a meeting agenda and a project study area map. An exhibit board of Owsley County and its buffer counties, shown in **Figure 1**, was also displayed showing the existing roadway network, cities, hospitals, universities, etc.

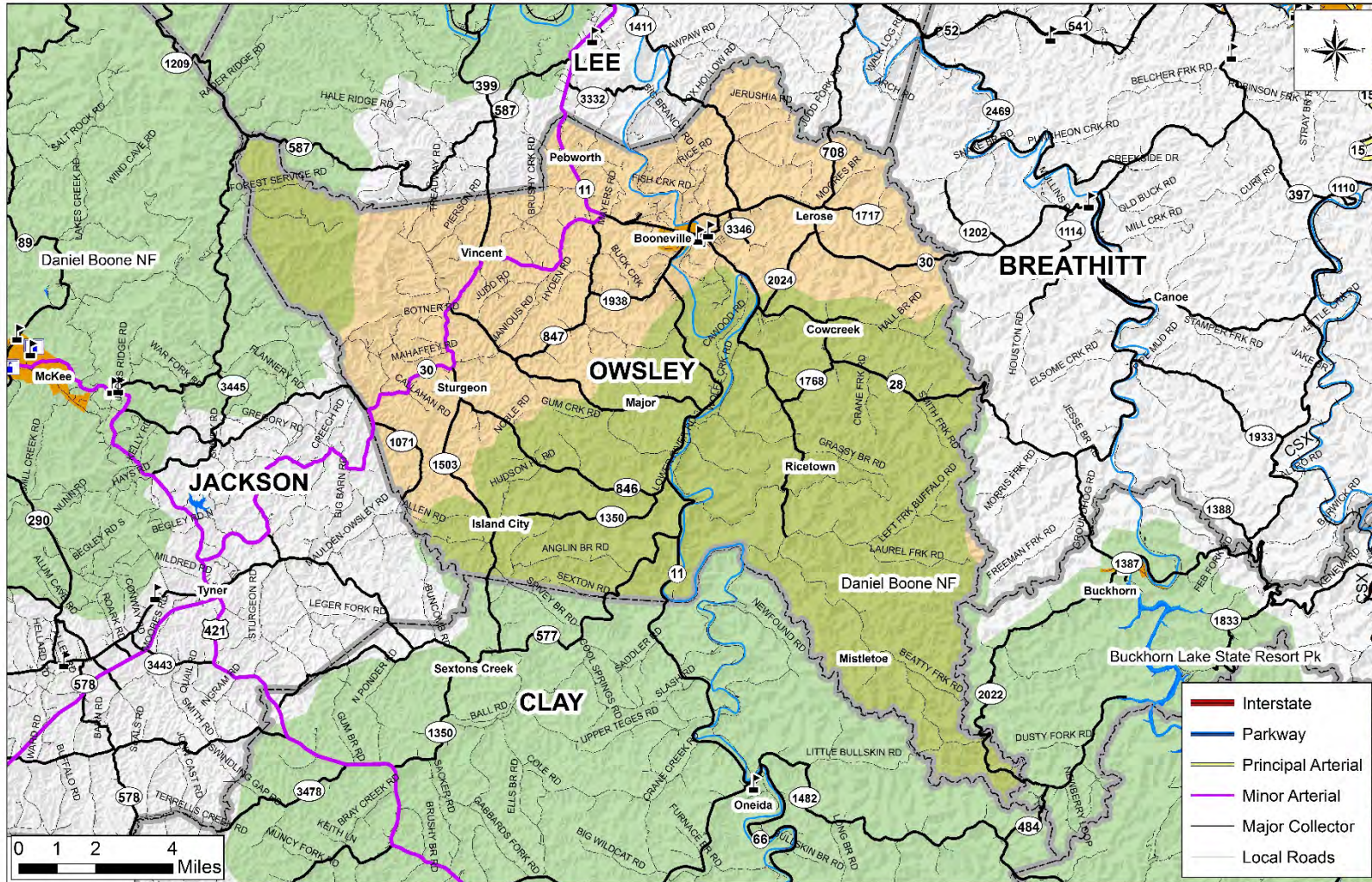


Figure 1: Owsley County Exhibit Board

Len Harper next led a group discussion. He noted the focus of the meeting was not to identify potential projects but to talk about the issues and concerns for the county. The discussion was to focus on answering big picture questions, such as, “What are the obstacles, constraints, and opportunities for growth in Owsley County?” Ultimately, the project team will draw from these issues and concerns to identify the need for and scope of potential transportation improvements within District 10 and neighboring areas. The emphasis is to improve safety, connectivity, and mobility at a regional level. The following questions were discussed during the meeting.

1. Where are Owsley County residents going for jobs, healthcare, shopping, recreation, etc.?
 - London in Laurel County, Corbin in Whitley and Knox Counties, Winchester in Clark County, Mt. Sterling in Montgomery County, Georgetown in Scott County, Lexington in Fayette County, and the Coal Fields Regional Industrial Park in Perry County are where most Owsley County residents go for jobs.
 - The majority of Owsley County residents stay close to home for recreation. The Sag Hollow Golf Club is located in Owsley County.
 - The Family Dollar in Booneville, Save-A-Lot in Beattyville (Lee County), Walmart in Jackson (Breathitt County) and London (Laurel County), and Richmond in Madison County are where most Owsley County residents go for shopping.
 - Jackson, Irvine, Corbin, and Lexington are where most Owsley County residents go for healthcare.

2. Where is the job growth, if any, occurring in Owsley County? A map from Kentucky’s Statewide Travel Demand Model (KYSTM) showing the projected change in employment between 2017 and 2040 was presented to help with the group exercise. It was noted that these projections come from Woods & Poole Economics. A good discussion was held on how this model is formulated. The map is shown in **Figure 2** and includes changes (boxed in yellow) recommended by Judge Turner and the KRADD.
 - With the availability of high speed internet, a growing job market in Owsley County are remote-work teleworks jobs. Approximately 150 people are working from home as customer service representatives for large companies. This number is expected to continue to grow.
 - County officials are working with the USFS to allow more development in Owsley County to take advantage of the tourism at the Red River Gorge.
 - The Kentucky River Area Development District (KRADD) recently completed the regional 2016-2017 Comprehensive Economic Development Strategy for Breathitt, Knott, Lee, Leslie, Letcher, Owsley, Perry and Wolfe Counties.
 - The area along KY 30 west and east of Booneville are getting new Dollar General stores.
 - The saw mill employing 30-50 people closed in northern Owsley County.

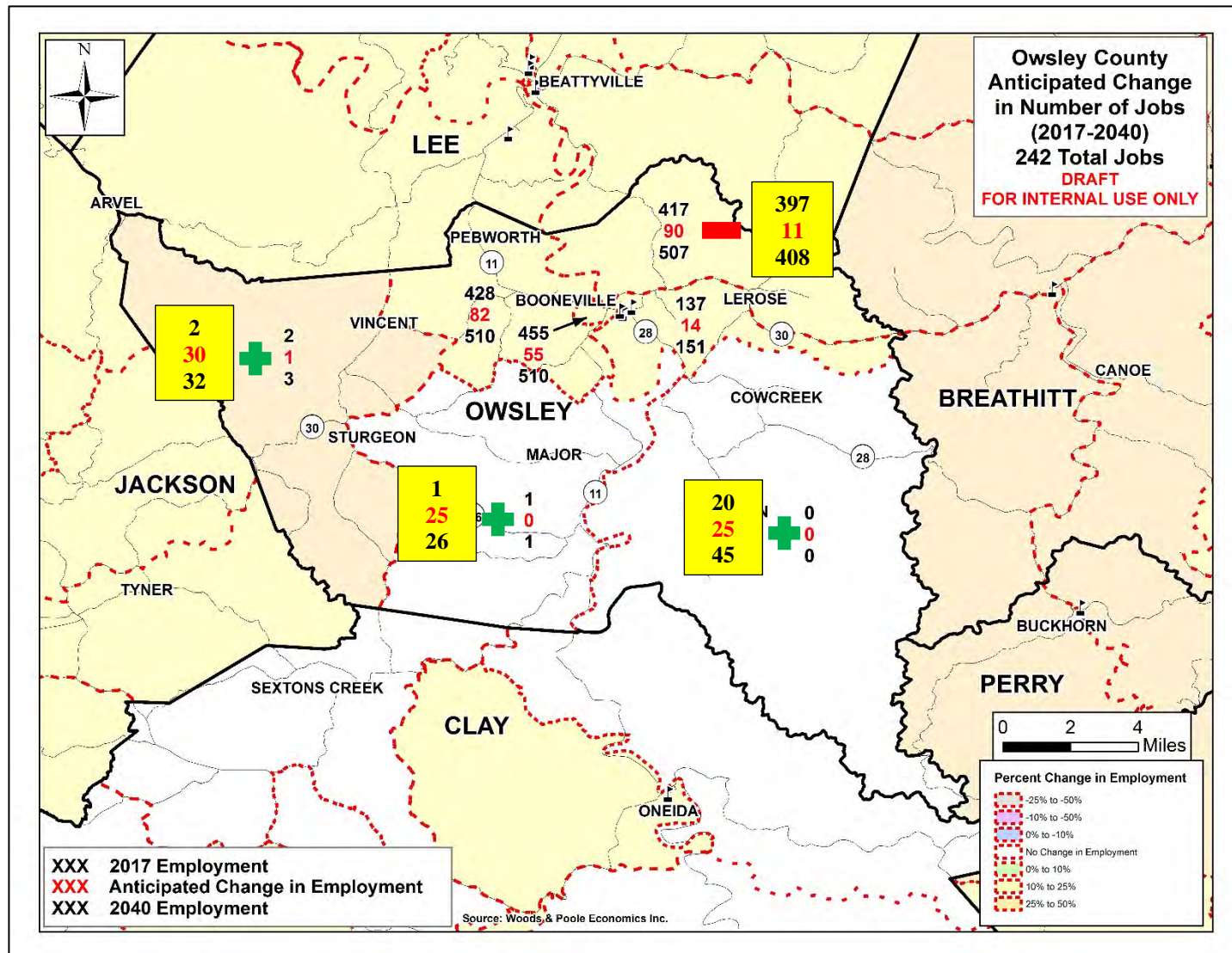


Figure 2: Owsley County Anticipated Change in Number of Jobs (2017-2040)

3. Where is Owsley County growing? A map from the KYSTM showing the change in population projections between 2017 and 2040 was presented to help with the group exercise. It was noted that these projections come from the Kentucky State Data Center and show the county's population decreasing by 397 people by 2040. The map is shown in **Figure 3** and includes changes (boxed in yellow) recommended by Judge Turner and the KRADD.
- Expect the population along KY 30 west of Booneville, along KY 11 north of Booneville, and in the city of Booneville to increase.
 - Population along KY 11 south of Booneville expected to stay flat.
 - Everywhere else expected to decrease.

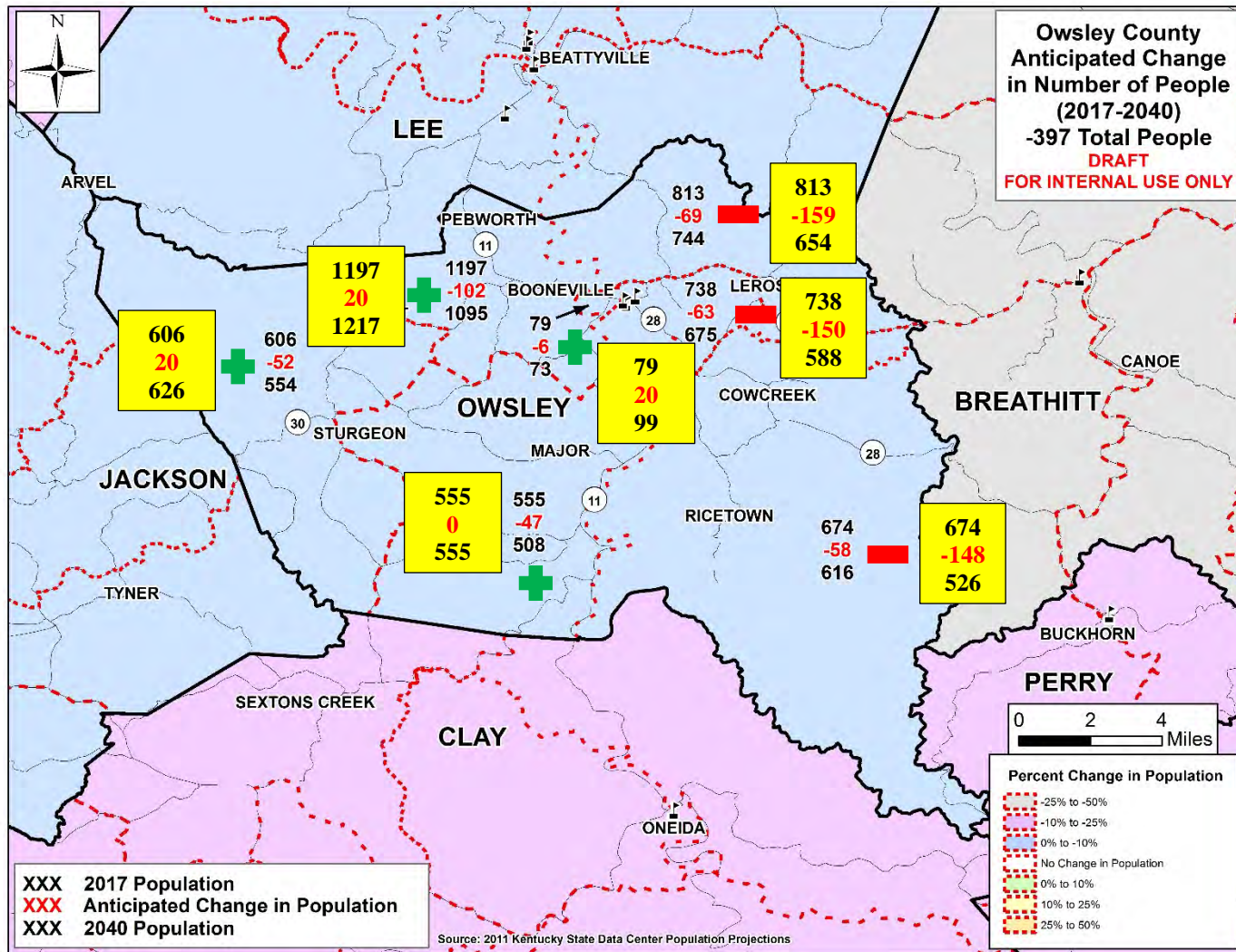


Figure 3: Owsley County Anticipated Change in Number of People (2017-2040)

4. What transportation issues are preventing people from getting where they want to go and preventing the county from growing?
 - A need to complete the KY 30 corridor was the main point of focus.
 - Need vocational job training and additional Teleworks training.

5. Len and Jason Blackburn ended the meeting with a discussion of the project schedule and next steps. The next step will be for the project team to have similar meetings with the remaining District 10 counties. The study process and results will then be presented for feedback to all District 10 Counties at a final “wrap-up” meeting in Spring 2018. The final report will be published in Summer 2018.

The meeting ended at approximately 10:00 a.m. EDT.

Meeting Minutes

TO: Mikael Pelfrey
Co-Project Manager
KYTC Central Office
200 Mero Street
Frankfort, KY 40622

Jason Blackburn
Co-Project Manager
KYTC District Office #10
473 Highway 15 South
Jackson, KY 41339

FROM: Brian Aldridge
Project Manager
Stantec Consulting Services Inc.

DATE: September 12, 2017

SUBJECT: KYTC District 10 Accessibility & Connectivity Study
District 10 Counties
KYTC Item No. N/A
Perry County Meeting

In support of the KYTC District 10 Accessibility and Connectivity Study, a meeting with Perry County officials was held at the District 10 Office's conference room in Jackson, KY on September 7, 2017 at 2:30 p.m. EDT. The following individuals were in attendance:

Brian Aldridge	Stantec Consulting Services Inc.
Scott Alexander	Perry County Judge Executive
Jason Blackburn	KYTC – District 10
Len Harper	Stantec Consulting Services Inc.

Jason Blackburn welcomed everyone and introductions were made. Brian Aldridge stated the purpose of the meeting was to discuss the state of transportation in Perry County with specific focus on residents' current travel patterns and needs. The goal of the meeting is to solicit input on potential growth areas and to determine local issues and transportation obstacles that may hinder travel. Handouts included a meeting agenda and a project study area map. An exhibit board of Perry County and its buffer counties, shown in **Figure 1**, was also displayed showing the existing roadway network, cities, hospitals, universities, etc.

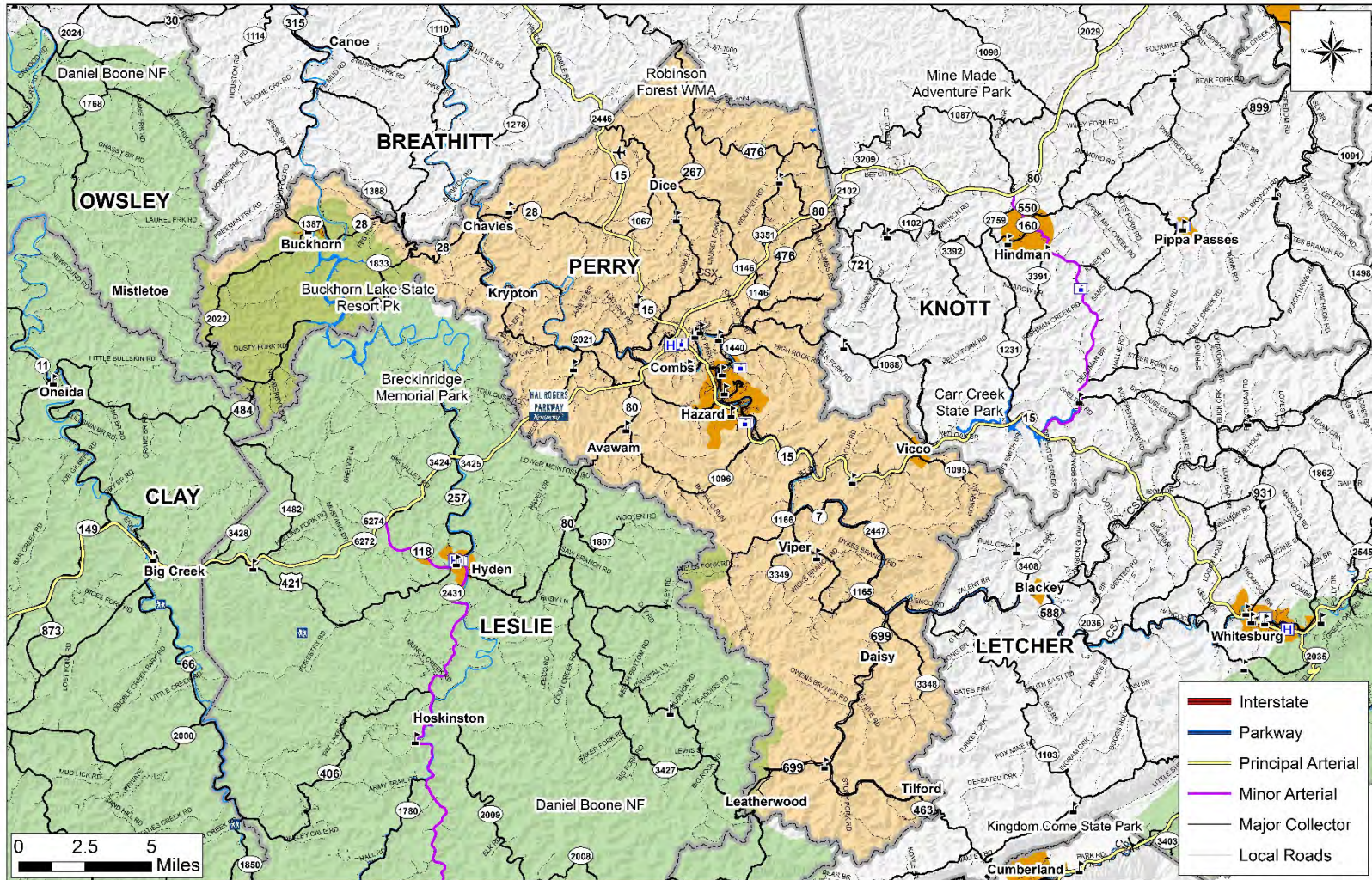


Figure 1: Perry County Exhibit Board

Brian Aldridge next led a group discussion. He noted the focus of the meeting was not to identify potential projects but to talk about the issues and concerns for the county. The discussion was to focus on answering big picture questions, such as, “What are the obstacles, constraints, and opportunities for growth in Perry County?” Ultimately, the project team will draw from these issues and concerns to identify the need for and scope of potential transportation improvements within District 10 and neighboring areas. The emphasis is to improve safety, connectivity, and mobility at a regional level. The following questions were discussed during the meeting.

1. Where are Perry County residents going for jobs, healthcare, shopping, recreation, etc.?
 - Georgetown in Scott County and London in Laurel County are where most Perry County residents go for jobs. Contrary to available data, there are very few Perry County residents that travel to Knott County for work.
 - The majority of Perry County residents go to the Red River Gorge, State Parks, and hunt for recreation. Those that are able to travel will go to the Lexington area.
 - Pikeville and Lexington are where most Perry County residents go for shopping.
 - Pikeville, Lexington, and Hazard are where most Perry County residents go for healthcare.

2. Where is the job growth, if any, occurring in Perry County? A map from Kentucky’s Statewide Travel Demand Model (KYSTM) showing the projected change in employment between 2017 and 2040 was presented to help with the group exercise. It was noted that these projections come from Woods & Poole Economics. A good discussion was held on how this model is formulated. The map is shown in **Figure 2** and includes changes (boxed in yellow) recommended by Judge Alexander.
 - The KY 80 corridor east of Combs is expected to add retail jobs.
 - No job growth is expected in western or southern Perry County near Buckhorn, Vicco, and Daisy.
 - There are over 10,000 people working in Hazard and job growth is expected to continue.
 - The Galen College of Nursing is in Hazard.
 - They are working on adding a technical school for wood flooring professionals.
 - Surrounding counties travel to Perry County for work.

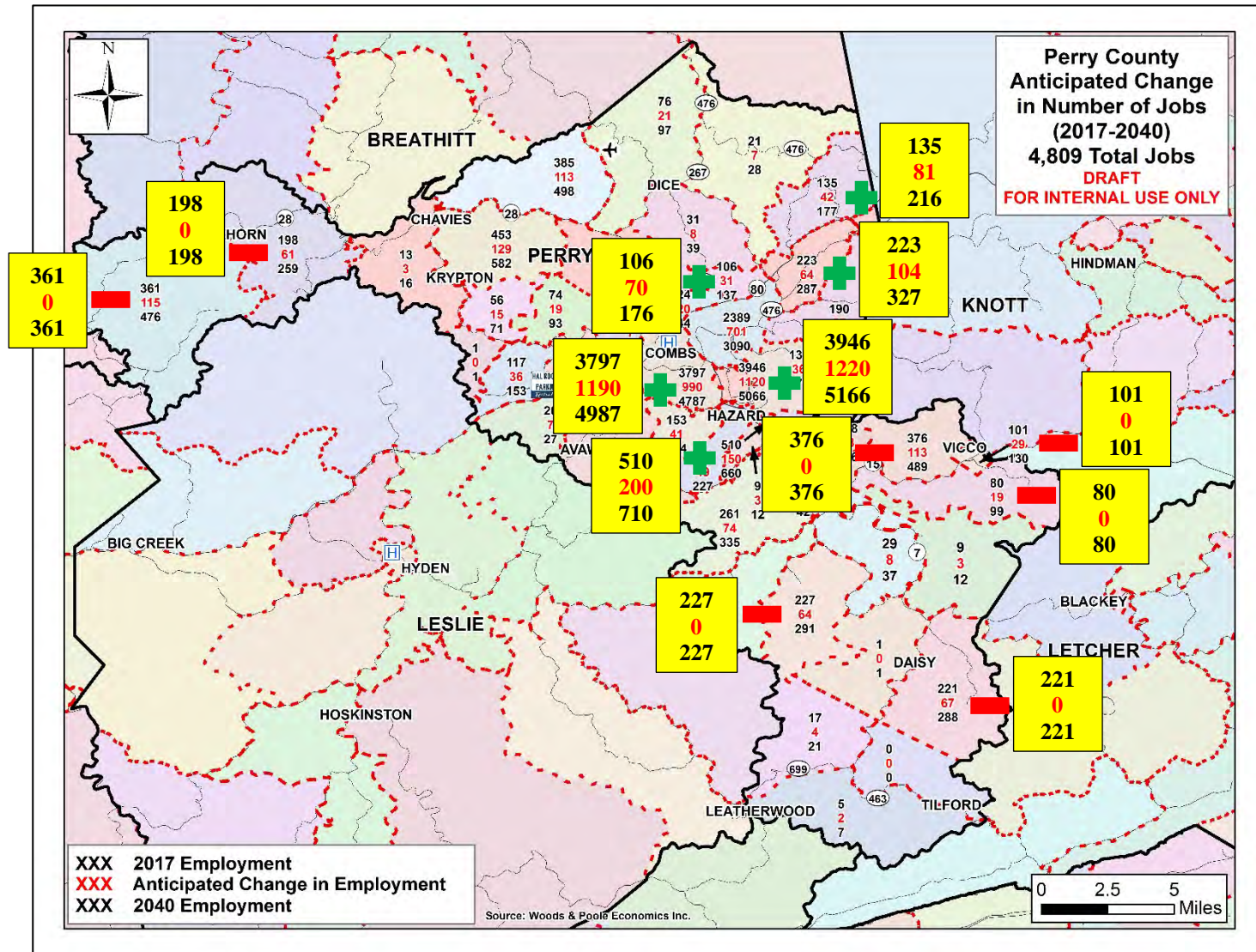


Figure 2: Perry County Anticipated Change in Number of Jobs (2017-2040)

3. Where is Perry County growing? A map from the KYSTM showing the change in population projections between 2017 and 2040 was presented to help with the group exercise. It was noted that these projections come from the Kentucky State Data Center and show the county's population decreasing by 3,317 people by 2040. The map is shown in **Figure 3** and includes changes (boxed in yellow) recommended by Judge Alexander.
- Perry County Schools are losing students but Hazard Independent Schools are gaining students.
 - The zones near the city of Hazard will likely have a stable population over the time period.
 - KY 15 near the airport and KY 80 near Knott County have new developments.
 - The southern part of the county near Daisy and Tilford are expected to see a loss in population with the loss in coal jobs in the area.

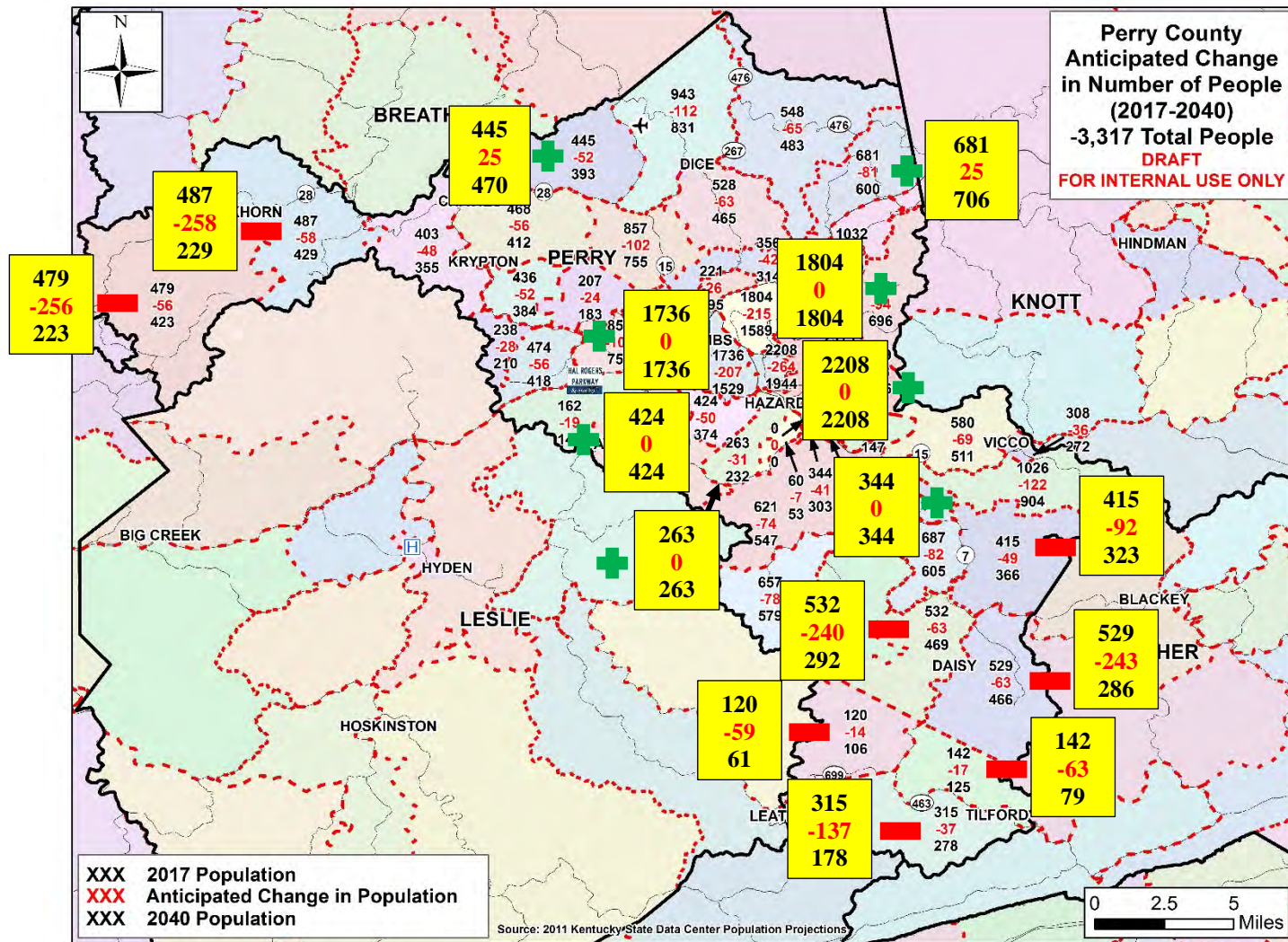


Figure 3: Perry County Anticipated Change in Number of People (2017-2040)

4. What transportation issues are preventing people from getting where they want to go and preventing the county from growing?
 - A need to complete the KY 15 corridor was the main point of focus.
 - Widening Hal Rogers Parkway to London was the next priority.
5. Brian and Jason Blackburn ended the meeting with a discussion of the project schedule and next steps. The next step will be for the project team to have similar meetings with the remaining District 10 Counties. The study process and results will then be presented for feedback to all District 10 Counties at a final “wrap-up” meeting in Spring 2018. The final report will be published in Summer 2018.

The meeting ended at approximately 3:45 p.m. EDT.

Meeting Minutes

TO: Mikael Pelfrey
Co-Project Manager
KYTC Central Office
200 Mero Street
Frankfort, KY 40622

Jason Blackburn
Co-Project Manager
KYTC District Office #10
473 Highway 15 South
Jackson, KY 41339

FROM: Brian Aldridge
Project Manager
Stantec Consulting Services Inc.

DATE: September 12, 2017

SUBJECT: KYTC District 10 Accessibility & Connectivity Study
District 10 Counties
KYTC Item No. N/A
Estill County Meeting

In support of the KYTC District 10 Accessibility and Connectivity Study, a meeting with Estill County officials was held at the Estill County Courthouse in Irvine, KY on September 8, 2017 at 10:00 a.m. EDT. The following individuals were in attendance:

Brian Aldridge	Stantec Consulting Services Inc.
Jason Blackburn	KYTC – District 10
Chris Chaney	Bluegrass Area Development District
Wallace Taylor	Estill County Judge Executive
Pete Wearstler	Bluegrass Area Development District
Graham Winchester	Stantec Consulting Services Inc.

Brian Aldridge welcomed everyone and said the purpose of the meeting was to discuss the state of transportation in Estill County with specific focus on residents' current travel patterns and needs. The goal of the meeting is to solicit input on potential growth areas and to determine local issues and transportation obstacles that may hinder travel. Handouts included a meeting agenda and a project study area map. An exhibit board of Estill County and its buffer counties, shown in **Figure 1**, was also displayed showing the existing roadway network, cities, hospitals, universities, etc.

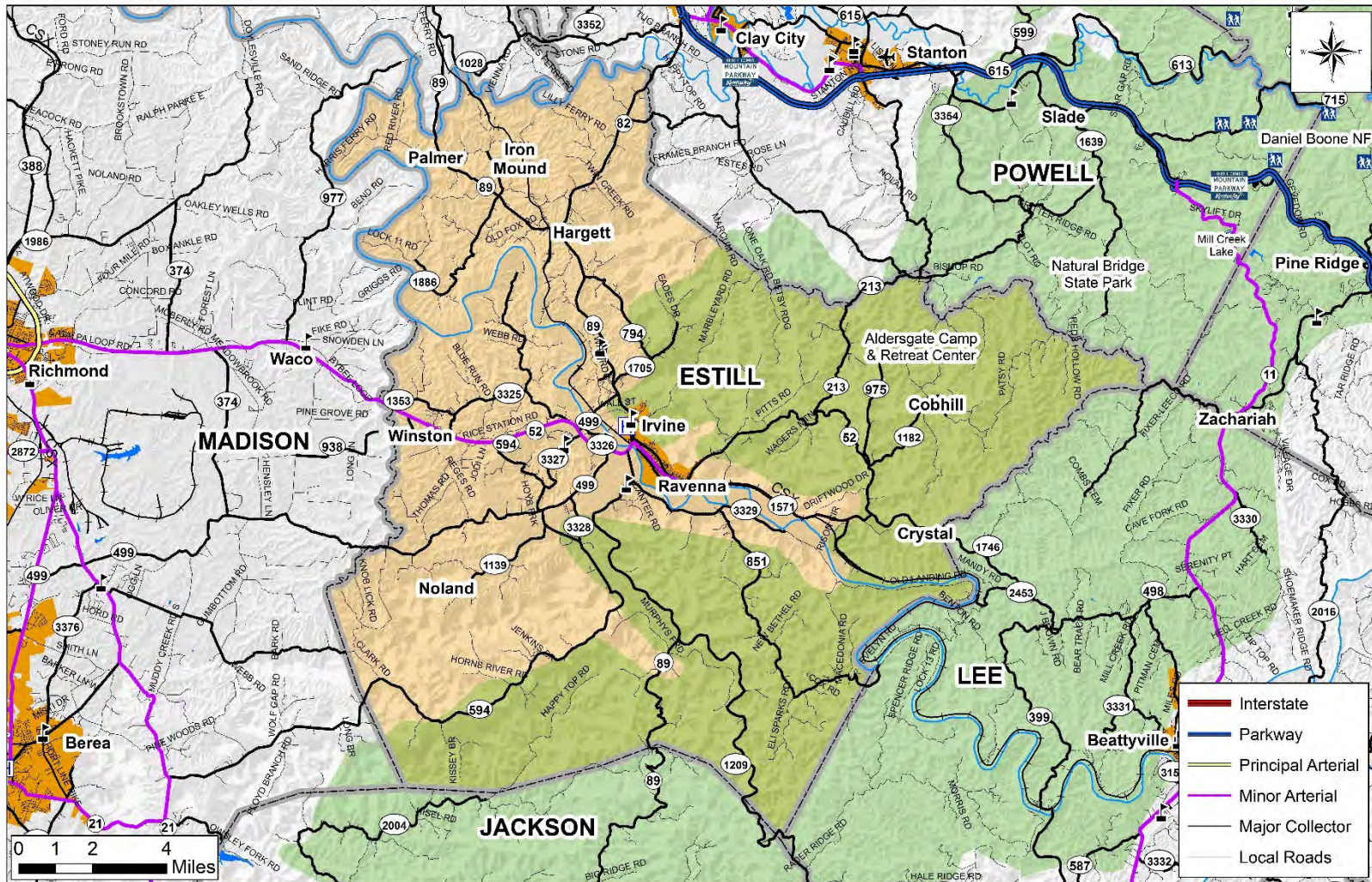


Figure 1: Estill County Exhibit Board

After introductions, Brian Aldridge led a group discussion. He noted the focus of the meeting was not to identify potential projects but to talk about the issues and concerns for the county. The discussion was to focus on answering big picture questions, such as, “What are the obstacles, constraints, and opportunities for growth in Estill County?” Ultimately, the project team will draw from these issues and concerns to identify the need for and scope of potential transportation improvements within District 10 and neighboring areas. The emphasis is to improve safety, connectivity, and mobility at a regional level. The following questions were discussed during the meeting.

1. Where are Estill County residents going for jobs, healthcare, shopping, recreation, etc.?
 - Mt. Sterling in Montgomery County, Winchester in Clark County, Lexington in Fayette County, and Richmond in Madison County are where most Estill County residents go for jobs.
 - Winchester in Clark County, Lexington in Fayette County, and Richmond in Madison County are where most Estill County residents go for shopping and recreation. Youth sporting activities draw Estill County residents to Stanton in Powell County and Mt. Sterling in Montgomery County.
 - The Marcum and Wallace Memorial Hospital in Irvine is where most Estill County residents go for healthcare. Estill County residents requiring specialized treatment go to Richmond in Madison County or Lexington in Fayette County.

2. Where is the job growth, if any, occurring in Estill County? A map from Kentucky’s Statewide Travel Demand Model (KYSTM) showing the projected change in employment between 2017 and 2040 was presented to help with the group exercise. It was noted that these projections come from Woods & Poole Economics. The map is shown in **Figure 2**. It was decided that the employment projections looked reasonable and should be left as is.
 - A vocational training school is planned near KY 82. This joint venture with Powell County will provide educational space for approximately 400 students and will provide training in areas such as construction, business marketing, and mechanics. Construction is expected to begin sometime in the spring of 2018.
 - Most of the job growth is occurring around Irvine, which began permitting the sale of alcohol at the end of 2013. According to Judge Taylor, four new restaurants have moved into the city within the last several years.
 - The music/entertainment industry is growing in Estill County. There is a music/art studio off KY 82 located in an old school. ‘Kickin’ It on the Creek’ is a popular music festival located in Irvine each year.

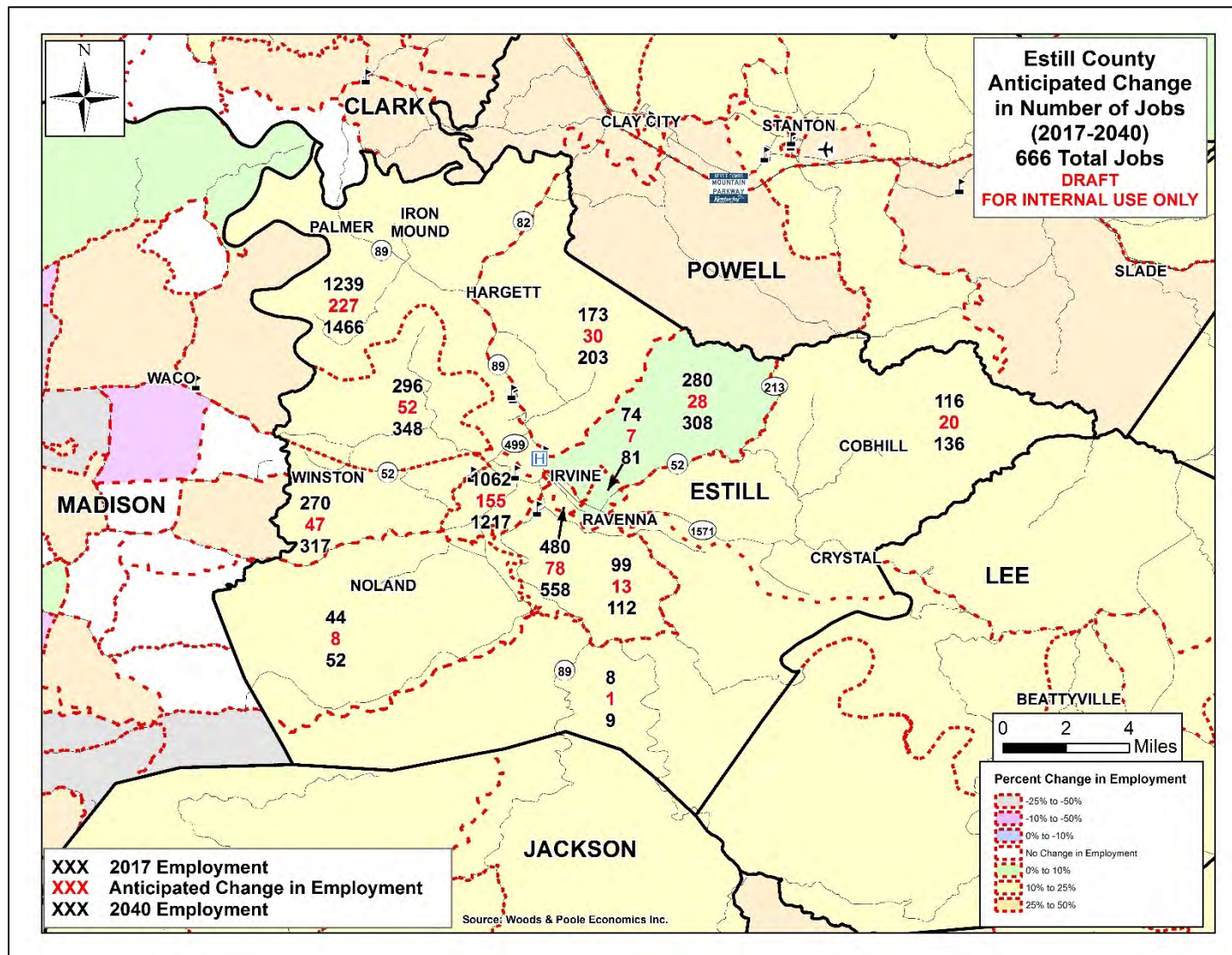


Figure 2: Estill County Anticipated Change in Number of Jobs (2017-2040)

- There is a possibility for an automotive manufacturer to move into Madison County near I-75. Judge Taylor hopes to see growth similar to that of Georgetown and the Toyota plant. Job growth would be boosted throughout Estill County, especially to the west. KY 52 connects Estill County to Richmond and would see an increase in traffic with the addition of an automotive manufacturer.
 - The TAZ around Iron Mound and Palmer is mostly undeveloped to the north but has several employers, such as the hospital, to the south. Most of the 1,239 current jobs are in the southern portion of the zone. The centroid connector for this zone should be located to the south.
3. Where is Estill County growing? A map from the KYSTM showing the change in population projections between 2017 and 2040 was presented to help with the group exercise. It was noted that these projections come from the Kentucky State Data Center. The map is shown in **Figure 3** and includes changes (boxed in yellow) recommended by Judge Taylor.
- The TAZ around Iron Mound and Palmer is undeveloped to the north but has more households to the south. Most of the 2017 population of 1,832 people live in the southern portion of the zone.
 - Judge Taylor mentioned that the population in the TAZ around Winston tends to be younger than the rest of the county. This area is only a ten-minute drive to Richmond and the population will likely remain flat between 2017 and 2040.
 - The TAZ north of Winston, with a 2017 population of 1,627, has good sites for building and will likely have a flat population between 2017 and 2040.
 - The TAZ bordering Jackson County is mostly undeveloped and will see a steeper decline in population.
 - The TAZ around Cobhill will also see a steeper population decline.

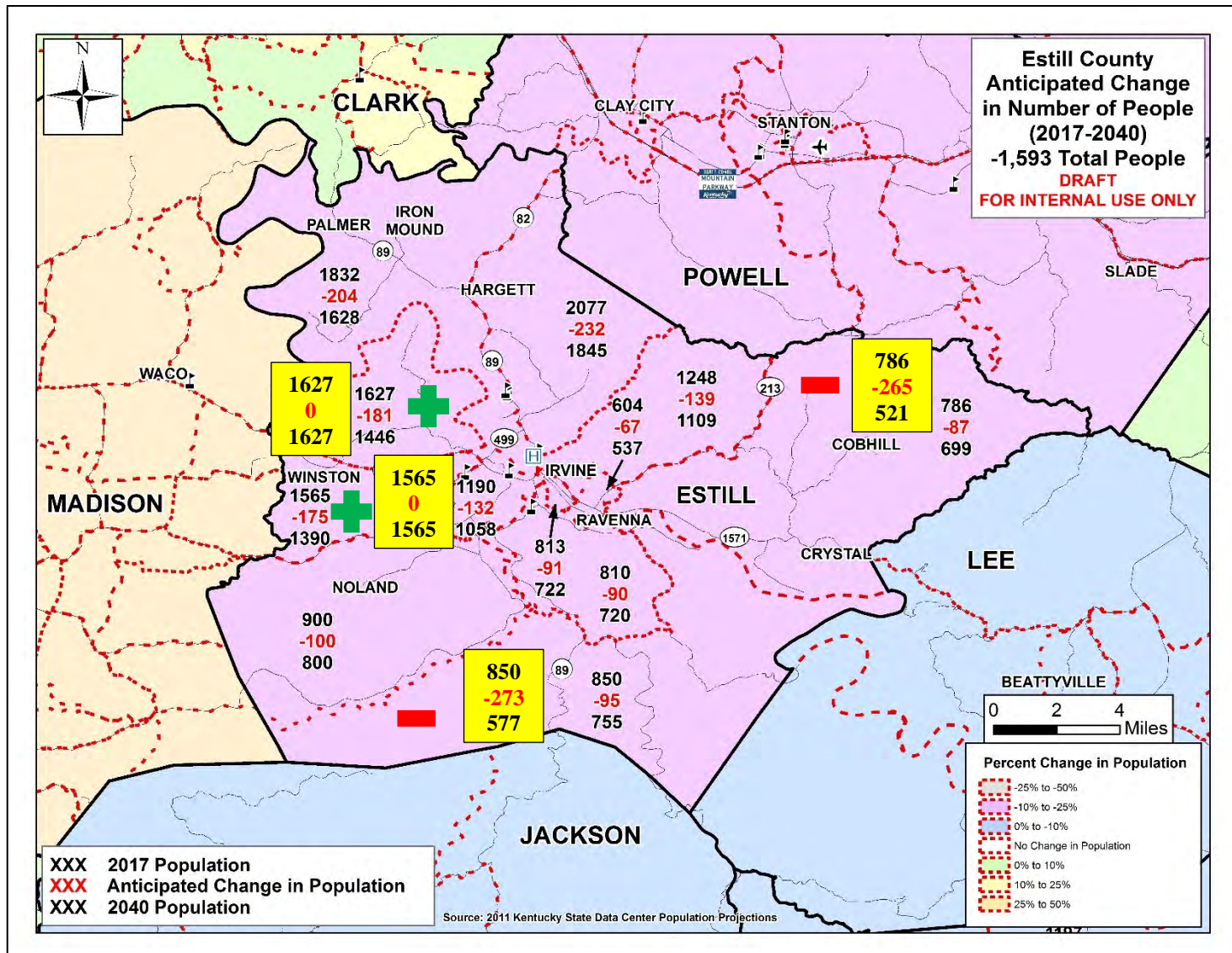


Figure 3: Estill County Anticipated Change in Number of People (2017-2040)

4. What transportation issues are preventing people from getting where they want to go and preventing the county from growing?
 - If the automotive plant is built in Madison County, KY 52 will see an increase in traffic. This will magnify the existing bottleneck issues in the in the western portion of the county. KY 52 will need safety and capacity improvements to accommodate the higher traffic volumes.
 - Estill County is considered an Immediate Response Zone for the Blue Grass Army Depot in Madison County. KY 82 and KY 89 would be used during an emergency, however neither are wide enough to handle trucks traveling at high speeds.
 - The Kentucky River KY 52 Bridge was built in 1940 and needs to be replaced. The lanes are narrow and there is not adequate space for pedestrians to cross safely.

5. Brian and Jason Blackburn ended the meeting with a discussion of the project schedule and next steps. The next step will be for the project team to have similar meetings with the remaining District 10 counties. The study process and results will then be presented for feedback to all District 10 Counties at a final “wrap-up” meeting in Spring 2018. The final report will be published in Summer 2018.

The meeting ended at approximately 11:00 a.m. EDT.

Meeting Minutes

TO: Mikael Pelfrey
Co-Project Manager
KYTC Central Office
200 Mero Street
Frankfort, KY 40622

Jason Blackburn
Co-Project Manager
KYTC District Office #10
473 Highway 15 South
Jackson, KY 41339

FROM: Brian Aldridge
Project Manager
Stantec Consulting Services Inc.

DATE: September 12, 2017

SUBJECT: KYTC District 10 Accessibility & Connectivity Study
District 10 Counties
KYTC Item No. N/A
Estill County Meeting

In support of the KYTC District 10 Accessibility and Connectivity Study, a meeting with Powell County officials was held at the Powell County Emergency Operations Center in Stanton, KY on September 8, 2017 at 1:30 p.m. EDT. The following individuals were in attendance:

Brian Aldridge	Stantec Consulting Services Inc.
James Anderson	Powell County Judge Executive
Jason Blackburn	KYTC – District 10
Chris Chaney	Bluegrass Area Development District
Pete Wearstler	Bluegrass Area Development District
Graham Winchester	Stantec Consulting Services Inc.

Brian Aldridge welcomed everyone and said the purpose of the meeting was to discuss the state of transportation in Powell County with specific focus on residents' current travel patterns and needs. The goal of the meeting is to solicit input on potential growth areas and to determine local issues and transportation obstacles that may hinder travel. Handouts included a meeting agenda and a project study area map. An exhibit board of Powell County and its buffer counties, shown in **Figure 1**, was also displayed showing the existing roadway network, cities, hospitals, universities, etc.

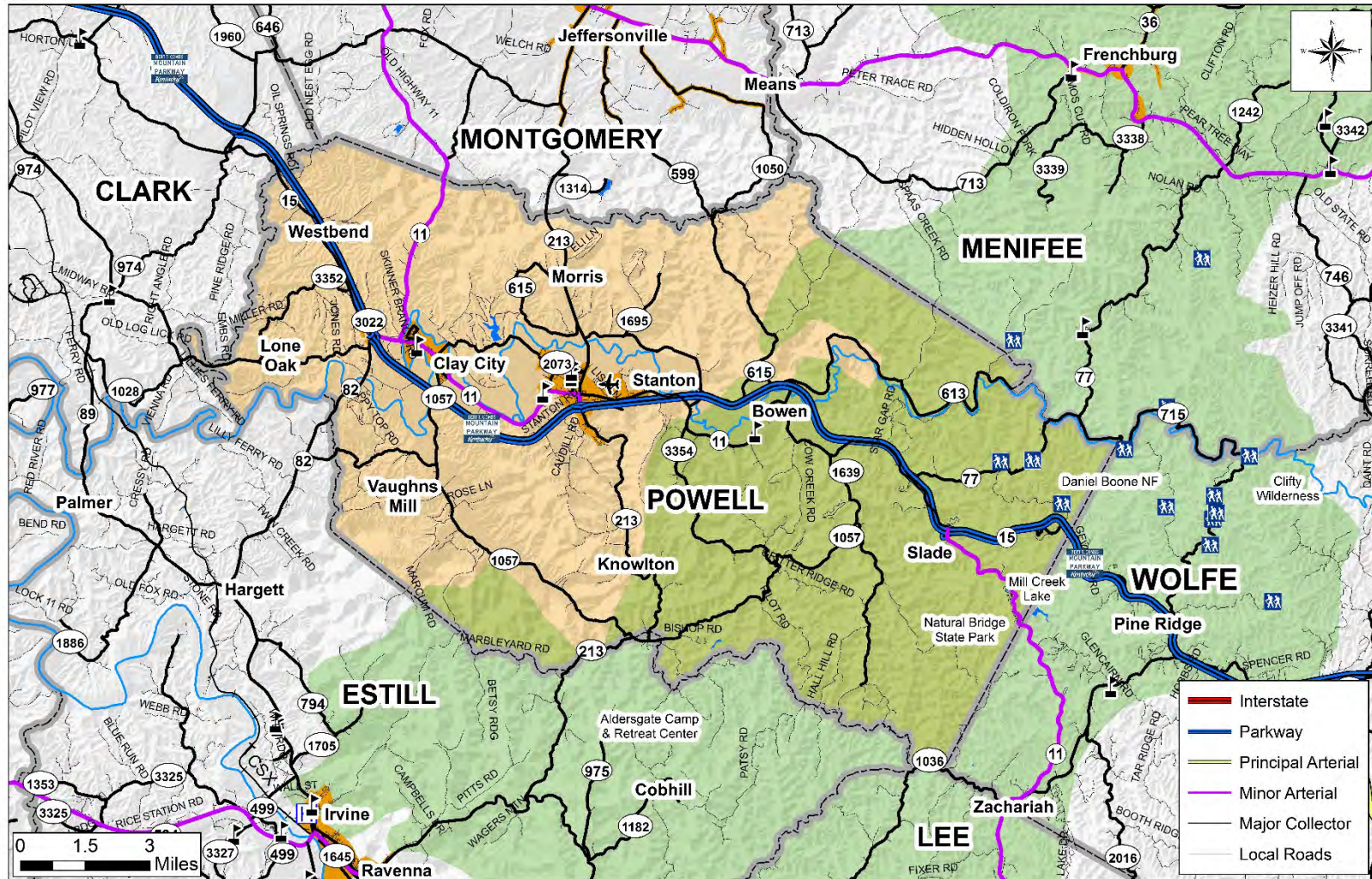


Figure 1: Powell County Exhibit Board

After introductions, Brian Aldridge led a group discussion. He noted the focus of the meeting was not to identify potential projects but to talk about the issues and concerns for the county. The discussion was to focus on answering big picture questions, such as, “What are the obstacles, constraints, and opportunities for growth in Powell County?” Ultimately, the project team will draw from these issues and concerns to identify the need for and scope of potential transportation improvements within District 10 and neighboring areas. The emphasis is to improve safety, connectivity, and mobility at a regional level. The following questions were discussed during the meeting.

1. Where are Powell County residents going for jobs, healthcare, shopping, recreation, etc.?
 - Lexington in Fayette County, Winchester in Clark County and Mt. Sterling in Montgomery County are where most Powell County residents go for jobs.
 - Lexington in Fayette County, Winchester in Clark County and Mt. Sterling in Montgomery County are where most Powell County residents go for shopping and recreation.
 - Lexington in Fayette County, Winchester in Clark County and Mt. Sterling in Montgomery County are where most Powell County residents go for healthcare.

2. Where is the job growth, if any, occurring in Powell County? A map from Kentucky’s Statewide Travel Demand Model (KYSTM) showing the projected change in employment between 2017 and 2040 was presented to help with the group exercise. It was noted that these projections come from Woods & Poole Economics. The map is shown in **Figure 2** and includes changes (boxed in yellow) recommended by Judge Anderson.
 - The TAZ covering Vaughns Mill, bordering Estill County, should have fewer than 323 jobs shown for 2017.
 - The TAZ to the east of Knowlton, with a 2017 employment of 133, should have a higher current employment of around 300.
 - The TAZ covering Lone Oak has the possibility of getting an industrial park. This could add 150 more jobs between 2017 and 2040.
 - The Area near Slade has tourist attractions such as Natural Bridge and could see double the employment growth shown. There is optimism for job growth because of the proposed Hollerwood Park. Hollerwood Park is 2,500 acres of leased property near Red River Gorge and Natural Bridge State Park. Operated by a Multi-County Recreational Board made up of 12 representatives from Lee, Estill, Wolfe and Powell Counties (LEWP). Hollerwood Park is a multitude of 4WD, UTV, ATV, Motorcycle, Horseback, and Mountain Bike trails.
 - The TAZ to the west of Morris should have a lower current employment, with 246 jobs currently shown.
 - The TAZ to the north of Slade should have more than 81 jobs shown for 2017.

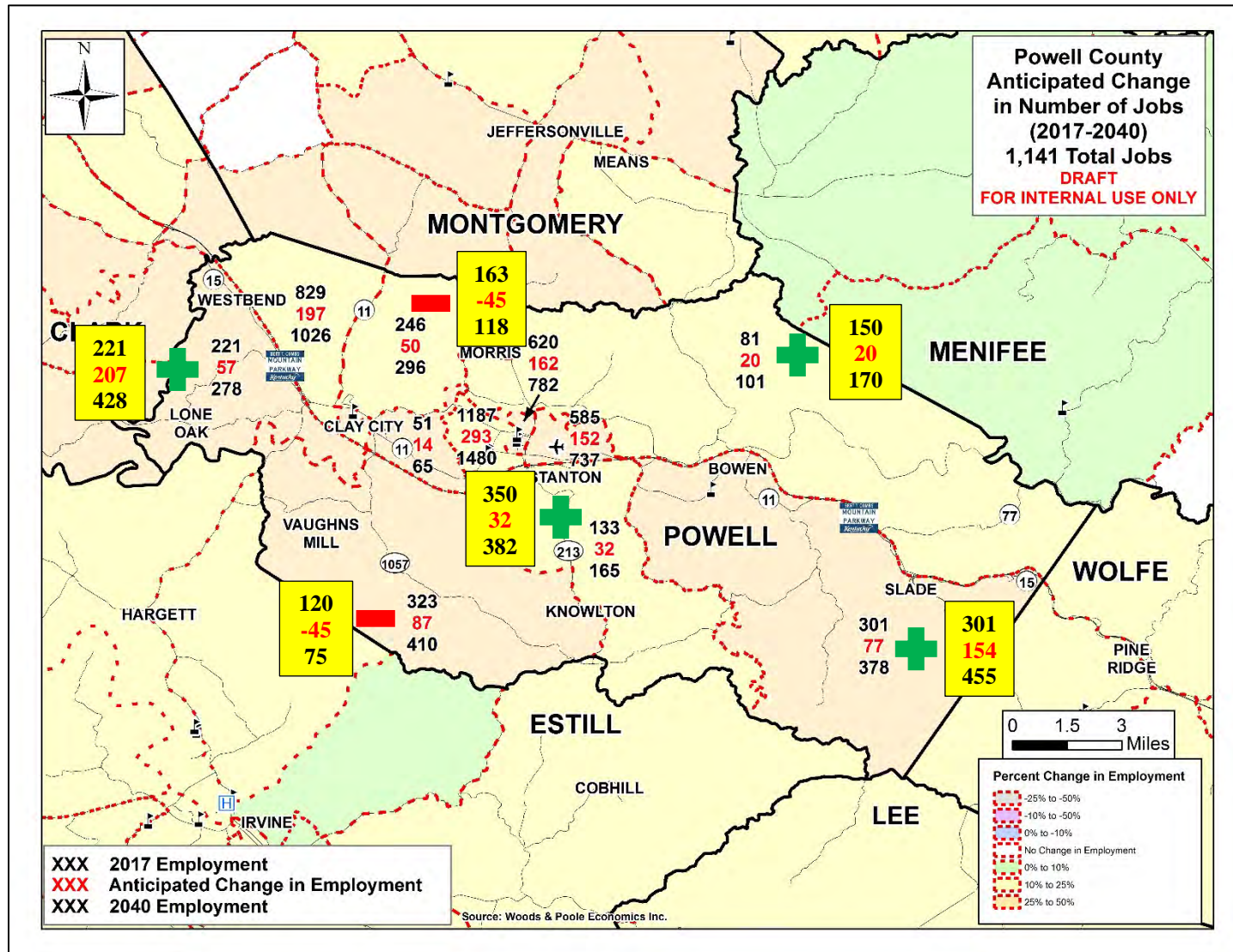


Figure 2: Powell County Anticipated Change in Number of Jobs (2017-2040)

3. Where is Powell County growing? A map from KYSTM showing the change in population projections between 2017 and 2040 were presented to help with the group exercise. It was noted that these projections come from the Kentucky State Data Center and show the county's population decreasing by 1,336 people by 2040. The map is shown in **Figure 3** and includes changes (boxed in yellow) recommended by Judge Anderson.
- Stanton should be expected to have a steady population between 2017 and 2040. Clay City, however, is in a floodplain and should be expected to have a declining population.
 - The TAZ covering Vaughns Mill has large areas of land prime for development. The population in this area could remain flat or see small growth between 2017 and 2040.
 - The TAZ to the east of Westbend, with a 2017 population of 860, could have a steeper decline in population.
 - The growth in the area around Slade is commercial rather than residential and could see a decline in population.
 - The population of the two TAZs near KY 213 bordering Montgomery County could remain relatively flat between 2017 and 2040.

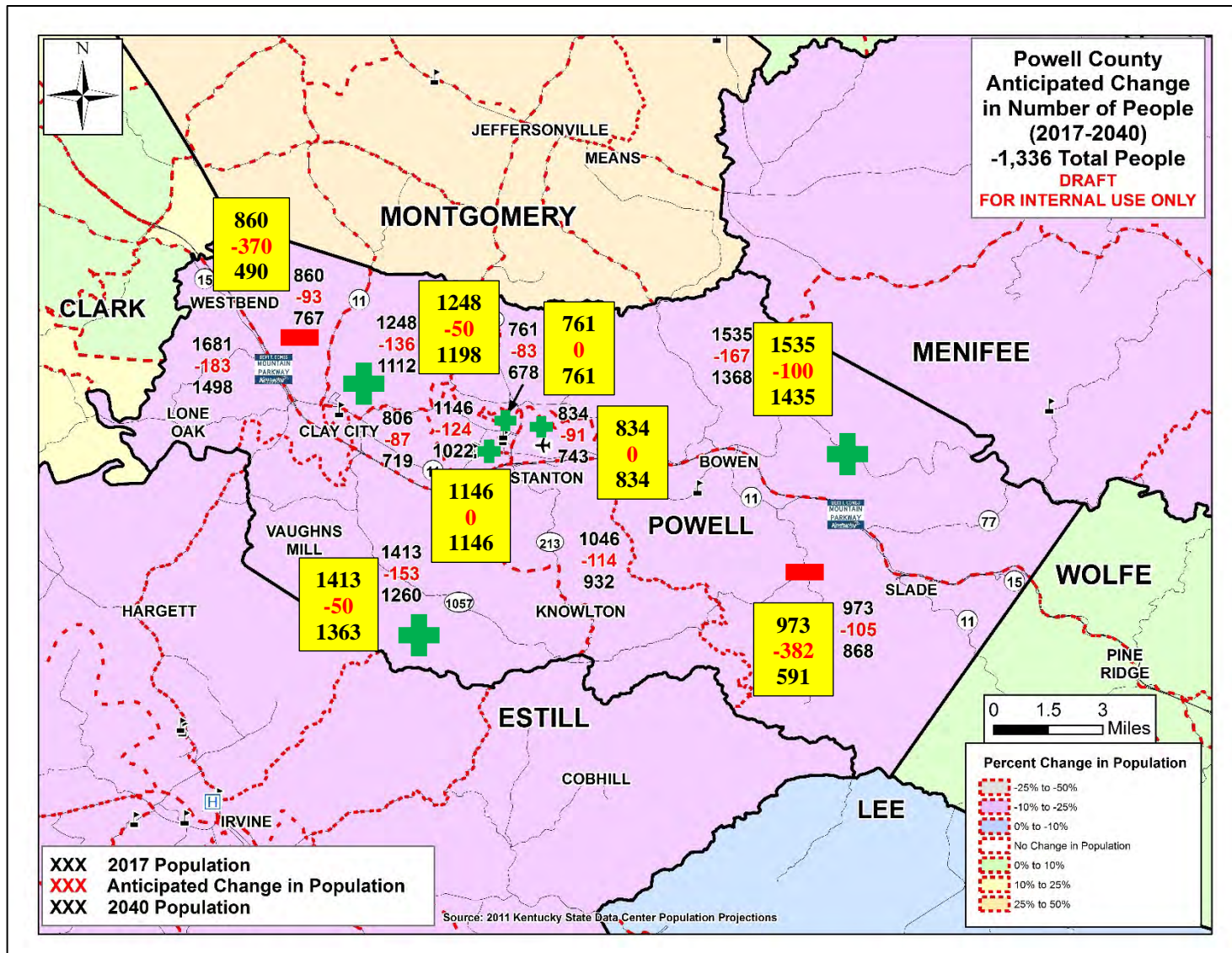


Figure 3: Powell County Anticipated Change in Number of People (2017-2040)

4. What transportation issues are preventing people from getting where they want to go and preventing the county from growing?
 - Pedestrian access is limited in urban areas (Stanton and Clay City) and recreational areas. Improving pedestrian amenities would encourage walking and biking in Powell County.
 - Most of the rural secondary roads are narrow and can be dangerous for unexperienced drivers. Widening these roads would benefit the entire region.
 - Flooding is an issue across most of Powell County. More permanent solutions to flooding problems are needed.

5. Brian and Jason Blackburn ended the meeting with a discussion of the project schedule and next steps. The next step will be for the project team to have similar meetings with the remaining District 10 counties. The study process and results will then be presented for feedback to all District 10 Counties at a final “wrap-up” meeting in Spring 2018. The final report will be published in Summer 2018.

The meeting ended at approximately 2:30 p.m. EDT.

Meeting Minutes

TO: Mikael Pelfrey
Co-Project Manager
KYTC Central Office
200 Mero Street
Frankfort, KY 40622

Jason Blackburn
Co-Project Manager
KYTC District Office #10
473 Highway 15 South
Jackson, KY 41339

FROM: Brian Aldridge
Project Manager
Stantec Consulting Services Inc.

DATE: September 15, 2017

SUBJECT: KYTC District 10 Accessibility & Connectivity Study
District 10 Counties
KYTC Item No. N/A
Magoffin County Meeting

In support of the KYTC District 10 Accessibility and Connectivity Study, a meeting with Magoffin County officials was held at the Paul B. Hall Regional Medical Center conference room in Paintsville, KY on September 13, 2017 at 1:30 p.m. EDT. The following individuals were in attendance:

Jason Blackburn	KYTC – District 10
Joe Jacobs	Big Sandy Area Development District
Charles Hardin, MD	Magoffin County Judge Executive
Randy Risner	Logan Corporation-Local Business
Paul Lyon	Mineral Labs-Local Business
Len Harper	Stantec Consulting Services Inc.
Steve Farmer	Stantec Consulting Services Inc.

Jason Blackburn welcomed everyone and introductions were made. Len Harper stated the purpose of the meeting was to discuss the state of transportation in Magoffin County with specific focus on residents' current travel patterns and needs. The goal of the meeting is to solicit input on potential growth areas and to determine local issues and transportation obstacles that may hinder travel. Handouts included a meeting agenda and a project study area map. An exhibit board of Magoffin County and its buffer counties, shown in **Figure 1**, was also displayed showing the existing roadway network, cities, hospitals, universities, etc.

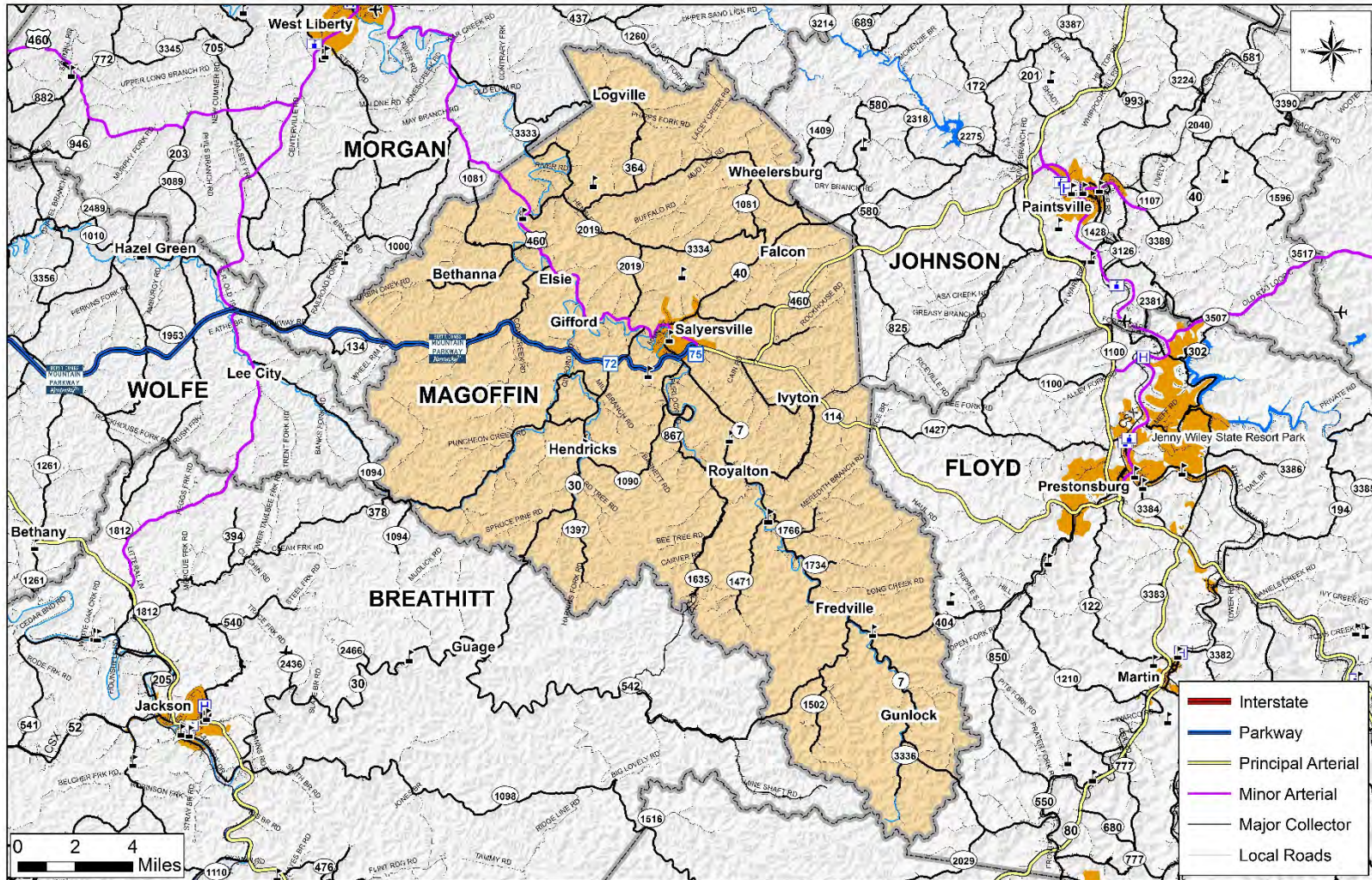


Figure 1: Magoffin County Exhibit Board

After introductions, Len Harper led a group discussion. He noted the focus of the meeting was not to identify potential projects but to talk about the issues and concerns for the county. The discussion was to focus on answering big picture questions, such as, “What are the obstacles, constraints, and opportunities for growth in Magoffin County?” Ultimately, the project team will draw from these issues and concerns to identify the need for and scope of potential transportation improvements within District 10 and neighboring areas. The emphasis is to improve safety, connectivity, and mobility at a regional level. The following questions were discussed during the meeting.

1. Where are Magoffin County residents going for jobs, healthcare, shopping, recreation, etc.?
 - Georgetown in Scott County, Lexington in Fayette County, Paintsville in Johnson County, and Ashland in Boyd County are where most Magoffin County residents go for jobs. CJE Hardin stressed that there were many residents of Magoffin County that were tradesmen and went all over the country where their particular craft was needed. They perform their trade in those locations for extended periods but maintain residency within the county coming home during weekends or once the project is complete while they wait for the next project.
 - Lexington, Huntington, West Virginia, and Pikeville are where most Magoffin County residents go for recreation.
 - Lexington, Prestonsburg in Floyd County, and Pikeville in Pike County are where most Magoffin County residents go for shopping.
 - Paintsville, Prestonsburg, and Pikeville are where most Magoffin County residents go for healthcare.

2. Where is the job growth, if any, occurring in Magoffin County? A map from Kentucky’s Statewide Travel Demand Model (KYSTM) showing the projected change in employment between 2017 and 2040 was presented to help with the group exercise. It was noted that these projections come from Woods & Poole Economics. A good discussion was held on how this model is formulated. The map is shown in **Figure 2** and includes changes (boxed in yellow) recommended by Dr. Hardin.
 - Magoffin County’s projected job growth is due to three reasons:
 - Magoffin County’s location
 - Magoffin County’s ability to serve as a bedroom community for surrounding areas
 - A gain in the service area in the Restaurant Row area
 - Two of the largest local private employers were present at the meeting, Logan Corporation and Mineral Labs. The greatest hindrance to hiring is the lack of a reliable workforce.
 - The location of Magoffin County on the Mountain Parkway is a main reason for the projected job growth.

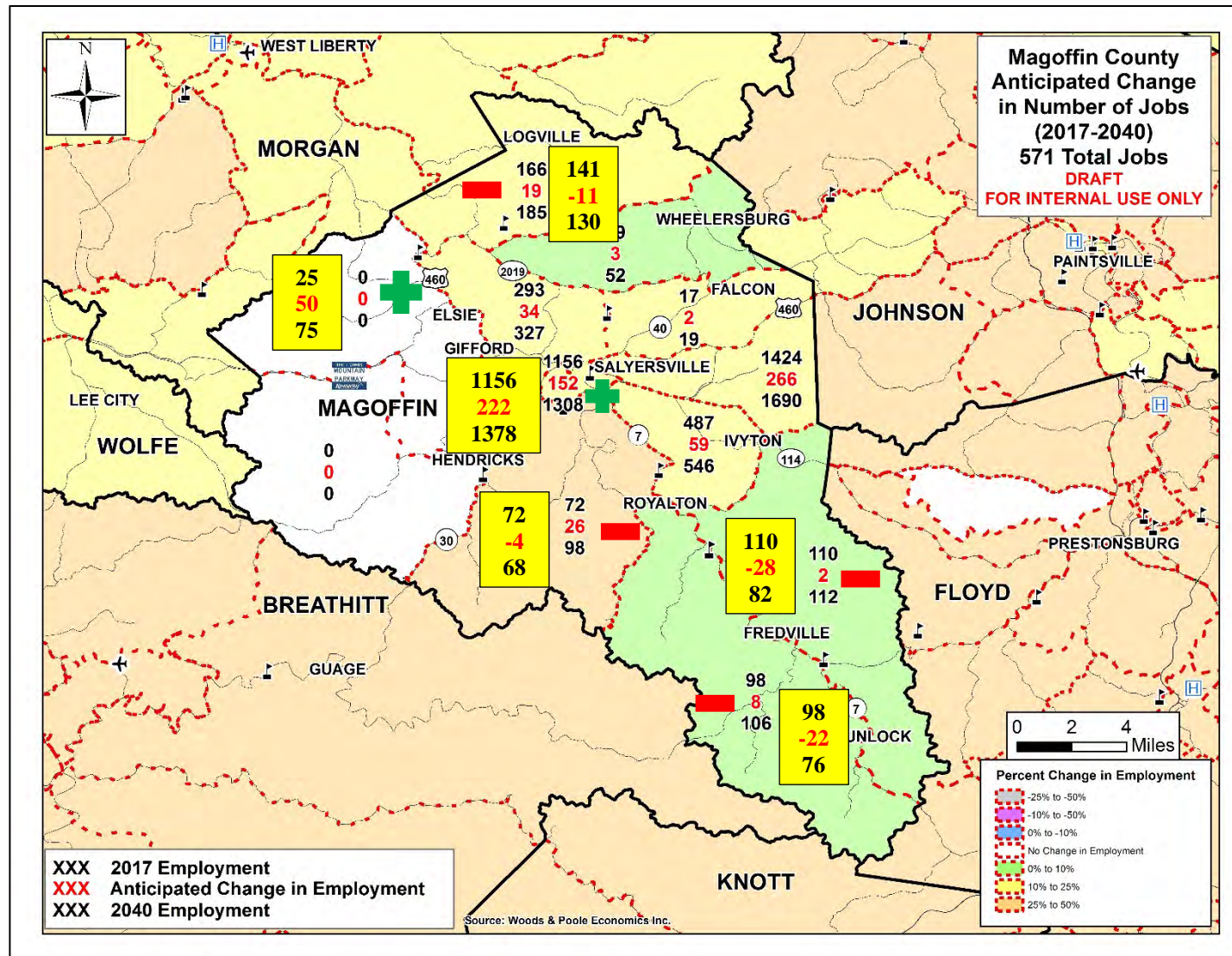


Figure 2: Magoffin County Anticipated Change in Number of Jobs (2017-2040)

- A new industrial park site was constructed at the new Gifford Road Interchange on the Mountain Parkway. This location will lead the job growth area of the county.
 - The zone in the western part of the county comprising of both Elsie and Gifford should have a higher current employment. This zone will also see positive job growth.
 - The Logville and Royalton parts of the county are not anticipated to grow as projected.
 - The areas in the southern part of the county will see steeper declines in employment.
 - Salyersville will see a higher rate of employment growth.
3. Where is Magoffin County growing? A map from the KYSTM showing the change in population projections between 2017 and 2040 were presented to help with the group exercise. It was noted that these projections come from the Kentucky State Data Center and show the county's population decreasing by 296 people by 2040. The map is shown in **Figure 3** and includes changes (boxed in yellow) recommended by Dr. Hardin.
- The Mountain Parkway corridor, Salyersville, Ivyton, and Gifford, will likely see population growth while the southern part of the county (near Gunlock and Fredville) will see a population decline.
 - The group stated that Gunlock was not a popular destination. Roads in that area are not connected and dead end into a hollow.
 - The zone containing Hendricks, with a current population of 764, will also see a decrease in population.

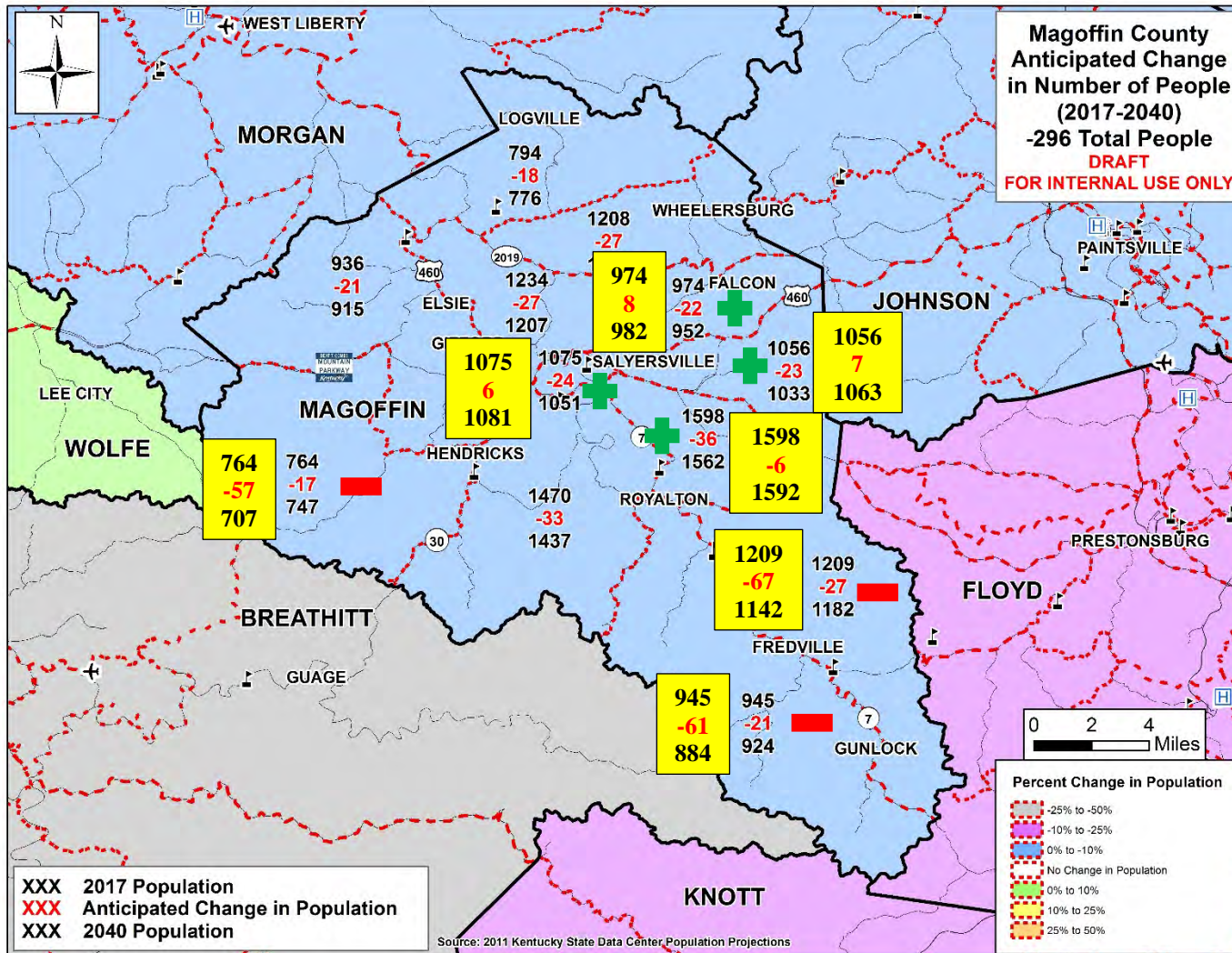


Figure 3: Magoffin County Anticipated Change in Number of People (2017-2040)

4. What transportation issues are preventing people from getting where they want to go and preventing the county from growing?
 - Completing the Mountain Parkway was the main transportation need discussed by the group.
 - The need for improvements to KY 114 to US 23 in Prestonsburg and US 460 to Paintsville were mentioned as the next two priorities.

5. Len and Jason Blackburn ended the meeting with a discussion of the project schedule and next steps. The next step will be for the project team to have similar meetings with the remaining District 10 Counties. The study process and results will then be presented for feedback to all District 10 Counties at a final “wrap-up” meeting in Spring 2018. The final report will be published in Summer 2018.

The meeting ended at approximately 2:45 p.m. EDT.

Meeting Minutes

TO: Mikael Pelfrey
Co-Project Manager
KYTC Central Office
200 Mero Street
Frankfort, KY 40622

Jason Blackburn
Co-Project Manager
KYTC District Office #10
473 Highway 15 South
Jackson, KY 41339

FROM: Brian Aldridge
Project Manager
Stantec Consulting Services Inc.

DATE: September 19, 2017

SUBJECT: KYTC District 10 Accessibility & Connectivity Study
District 10 Counties
KYTC Item No. N/A
Breathitt County Meeting

In support of the KYTC District 10 Accessibility and Connectivity Study, a meeting with Breathitt County officials was held at the District 10 Office's conference room in Jackson, KY on September 18, 2017 at 11:30 a.m. EDT. The following individuals were in attendance:

Jason Blackburn	KYTC – District 10
J.L. Smith	Breathitt County Judge Executive
Eunice Holland	Kentucky River Area Development District
Len Harper	Stantec Consulting Services Inc.
Steve Farmer	Stantec Consulting Services Inc.

Jason Blackburn welcomed everyone and introductions were made. Len Harper stated the purpose of the meeting was to discuss the state of transportation in Breathitt County with specific focus on residents' current travel patterns and needs. The goal of the meeting is to solicit input on potential growth areas and to determine local issues and transportation obstacles that may hinder travel. Handouts included a meeting agenda and a project study area map. An exhibit board of Breathitt County and its buffer counties, shown in **Figure 1**, was also displayed showing the existing roadway network, cities, hospitals, universities, etc.

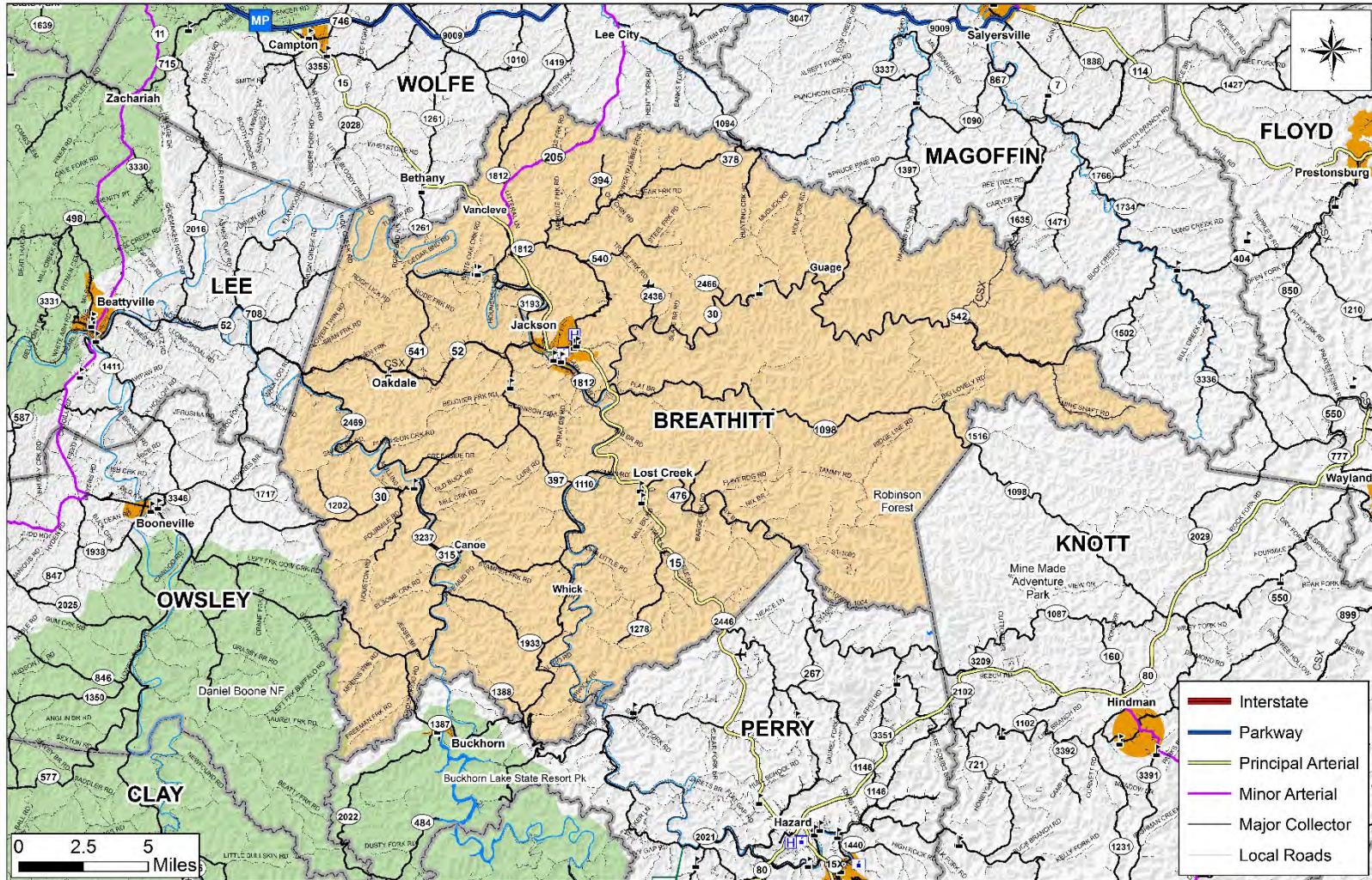


Figure 1: Breathitt County Exhibit Board

Len Harper next led a group discussion. He noted the focus of the meeting was not to identify potential projects but to talk about the issues and concerns for the county. The discussion was to focus on answering big picture questions, such as, “What are the obstacles, constraints, and opportunities for growth in Breathitt County?” Ultimately, the project team will draw from these issues and concerns to identify the need for and scope of potential transportation improvements within District 10 and neighboring areas. The emphasis is to improve safety, connectivity, and mobility at a regional level. The following questions were discussed during the meeting.

1. Where are Breathitt County residents going for jobs, healthcare, shopping, recreation, etc.?
 - Winchester in Clark County, Georgetown in Scott County, Lexington in Fayette County, Mt. Sterling in Montgomery County, and Cincinnati, Ohio are where most Breathitt County residents go for jobs. Contrary to available data, there are very few Breathitt County residents that travel to Lee County for work.
 - The majority of Breathitt County residents stay close to home for recreation. Those that are able to travel will go to the Lexington area.
 - Lexington and Hazard in Perry County are where most Breathitt County residents go for shopping.
 - Winchester, Lexington, and Hazard are where most Breathitt County residents go for healthcare.

2. Where is the job growth, if any, occurring in Breathitt County? A map from Kentucky’s Statewide Travel Demand Model (KYSTM) showing the projected change in employment between 2017 and 2040 was presented to help with the group exercise. It was noted that these projections come from Woods & Poole Economics. A good discussion was held on how this model is formulated. The map is shown in **Figure 2** and includes changes (boxed in yellow) recommended by Judge Smith.
 - The county is projected to have job growth seems to be unrealistic due to projections that show the population steeply declining.
 - The southern part of the county appeared to be the most reasonable on the employment model.
 - The northern part of the county near Guage should have a lower current population and will see little growth.
 - The area near Jackson should have a higher current employment and will see the most growth.
 - The area west of Jackson should have a lower current population and will see little growth.

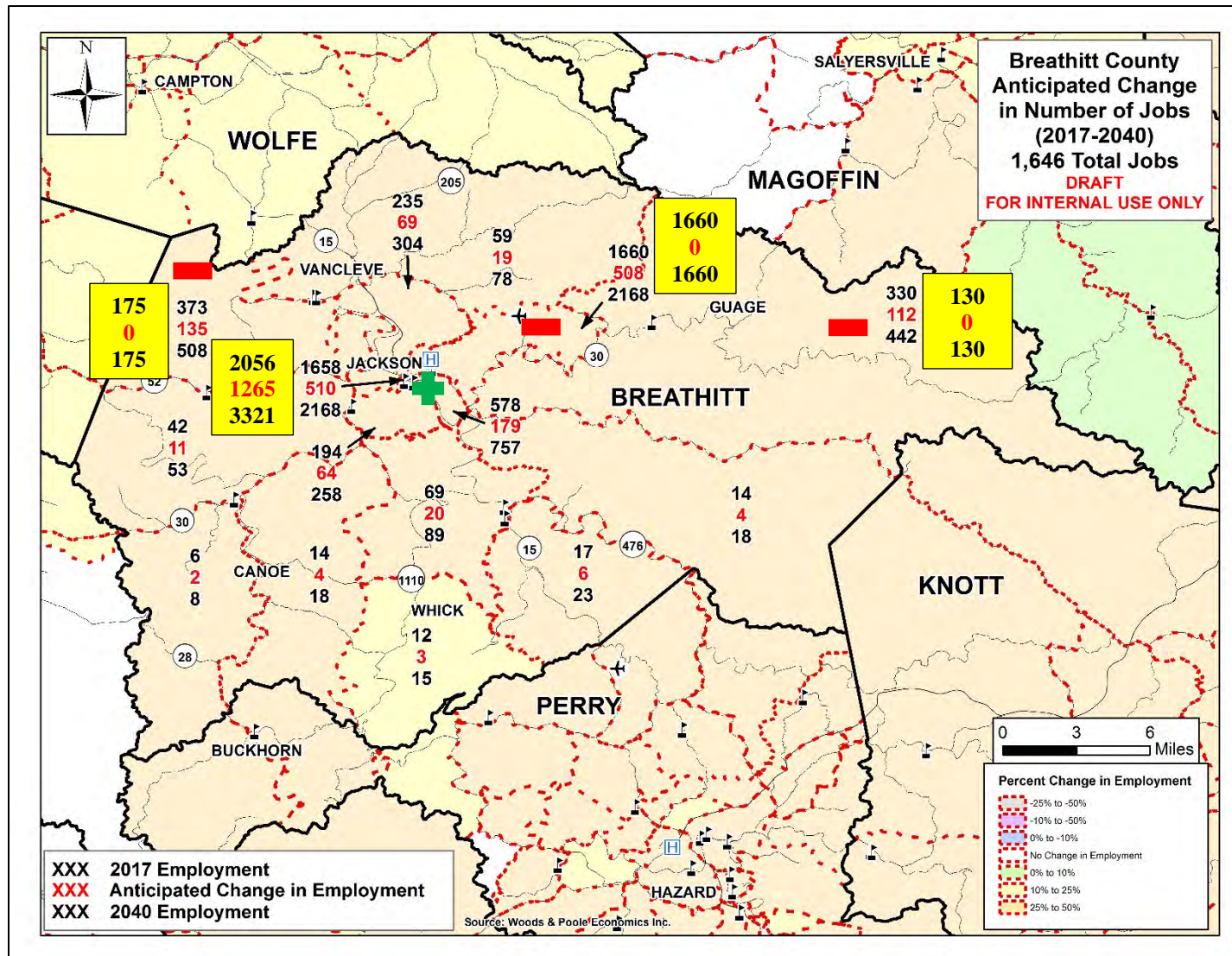


Figure 2: Breathitt County Anticipated Change in Number of Jobs (2017-2040)

3. Where is Breathitt County growing? A map from the KYSTM showing the change in population projections between 2017 and 2040 was presented to help with the group exercise. It was noted that these projections come from the Kentucky State Data Center and show the county's population decreasing by 3,405 people by 2040. The map is shown in **Figure 3** and includes changes (boxed in yellow) recommended by Judge Smith.
- The five zones near the city of Jackson will likely have a stable population over the time period. These zones should have higher 2040 populations.
 - The two eastern most zones will see steeper population decline.
 - The western zone with a current population of 1,123 will see a steeper population decline.

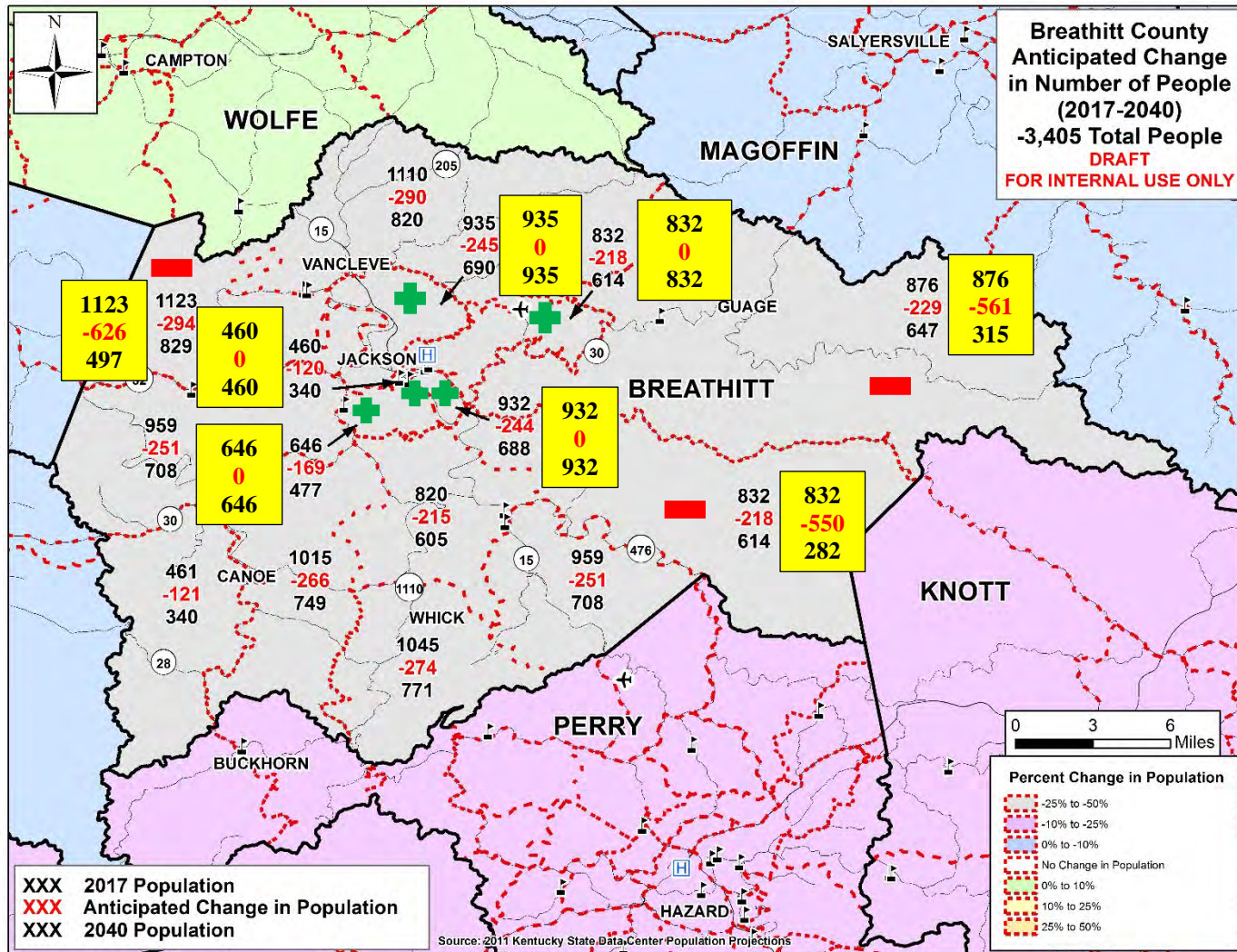


Figure 3: Breathitt County Anticipated Change in Number of People (2017-2040)

4. What transportation issues are preventing people from getting where they want to go and preventing the county from growing?
 - A need to complete the KY 15 corridor was the main point of focus.
 - The need for improvements to KY 30 to improve access to I-75 was the next priority.
 - The KY 205 corridor was also mentioned. The highest priority portion near Wolfe County is currently under construction.

5. Len and Jason Blackburn ended the meeting with a discussion of the project schedule and next steps. The next step will be for the project team to have similar meetings with the remaining District 10 Counties. The study process and results will then be presented for feedback to all District 10 Counties at a final “wrap-up” meeting in Spring 2018. The final report will be published in Summer 2018.

The meeting ended at approximately 12:30 p.m. EDT.

Meeting Minutes

TO: Mikael Pelfrey
Co-Project Manager
KYTC Central Office
200 Mero Street
Frankfort, KY 40622

Jason Blackburn
Co-Project Manager
KYTC District Office #10
473 Highway 15 South
Jackson, KY 41339

FROM: Brian Aldridge
Project Manager
Stantec Consulting Services Inc.

DATE: September 22, 2017

SUBJECT: KYTC District 10 Accessibility & Connectivity Study
District 10 Counties
KYTC Item No. N/A
Lee County Meeting

In support of the KYTC District 10 Accessibility and Connectivity Study, a meeting with Lee County officials was held at the Lee County Courthouse in Beattyville, KY on September 20, 2017 at 10:00 a.m. EDT. The following individuals were in attendance:

Brian Aldridge	Stantec Consulting Services Inc.
Jason Blackburn	KYTC – District 10
Eunice Holland	Kentucky River Area Development District
Len Harper	Stantec Consulting Services Inc.
Steve Mays	Lee County Judge Executive

Jason Blackburn welcomed everyone and introductions were made. Brian Aldridge stated the purpose of the meeting was to discuss the state of transportation in Lee County with specific focus on residents' current travel patterns and needs. The goal of the meeting is to solicit input on potential growth areas and to determine local issues and transportation obstacles that may hinder travel. Handouts included a meeting agenda and a project study area map. An exhibit board of Lee County and its buffer counties, shown in **Figure 1**, was also displayed showing the existing roadway network, cities, hospitals, universities, etc.

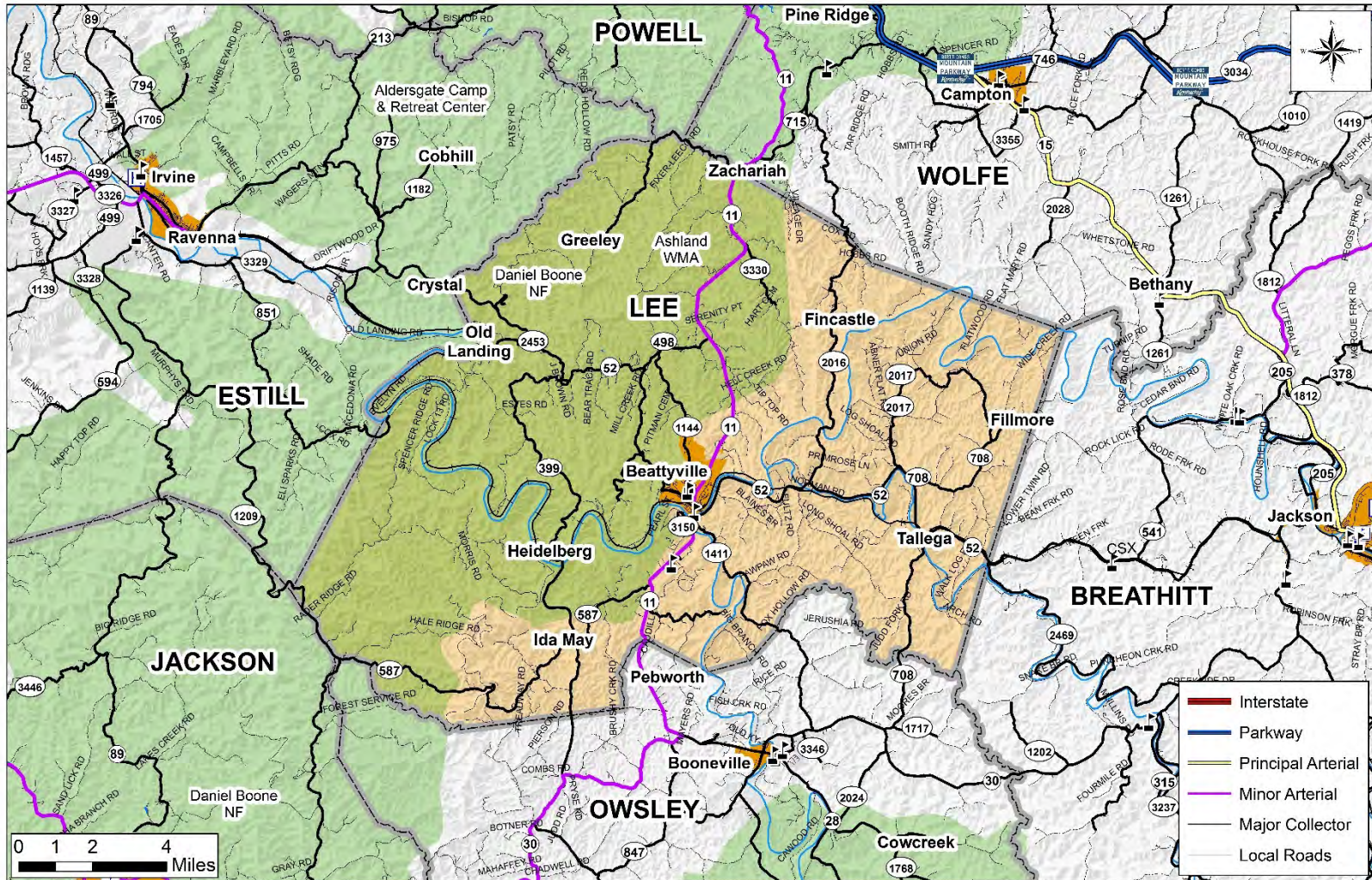


Figure 1: Lee County Exhibit Board

Brian Aldridge next led a group discussion. He noted the focus of the meeting was not to identify potential projects but to talk about the issues and concerns for the county. The discussion was to focus on answering big picture questions, such as, “What are the obstacles, constraints, and opportunities for growth in Lee County?” Ultimately, the project team will draw from these issues and concerns to identify the need for and scope of potential transportation improvements within District 10 and neighboring areas. The emphasis is to improve safety, connectivity, and mobility at a regional level. The following questions were discussed during the meeting.

1. Where are Lee County residents going for jobs, healthcare, shopping, recreation, etc.?
 - Winchester in Clark County, Georgetown in Scott County, Lexington in Fayette County, and Richmond in Madison County are where most Lee County residents go for jobs.
 - The majority of Lee County residents stay close to home for recreation. Those that are able to travel will go to the Richmond area.
 - Richmond in Madison County are where most Lee County residents go for shopping.
 - Jackson, Irvine, Richmond, and Lexington are where most Lee County residents go for healthcare.

2. Where is the job growth, if any, occurring in Lee County? A map from Kentucky’s Statewide Travel Demand Model (KYSTIM) showing the projected change in employment between 2017 and 2040 was presented to help with the group exercise. It was noted that these projections come from Woods & Poole Economics. A good discussion was held on how this model is formulated. The map is shown in **Figure 2** and includes changes (boxed in yellow) recommended by Judge Mays.
 - The prison in Beattyville is reopening which will create 150 jobs.
 - A new medical center is expected in the industrial park off KY 11 south of Beattyville.
 - Retail growth expected along KY 11 north of Beattyville.
 - The area near Beattyville will see the most growth.
 - The area west of Jackson should have a lower current population and will see little growth.
 - Job growth is expected to decline in the eastern part of Lee County.
 - The south western TAZ should be split at Heidelberg.
 - There is optimism for job growth because of the proposed Hollerwood Park. Hollerwood Park is 2,500 acres of leased property near Red River Gorge and Natural Bridge State Park. Operated by a Multi-County Recreational Board made up of 12 representatives from Lee, Estill, Wolfe and Powell Counties (LEWP). Hollerwood Park is a multitude of 4WD, UTV, ATV, Motorcycle, Horseback, and Mountain Bike trails.

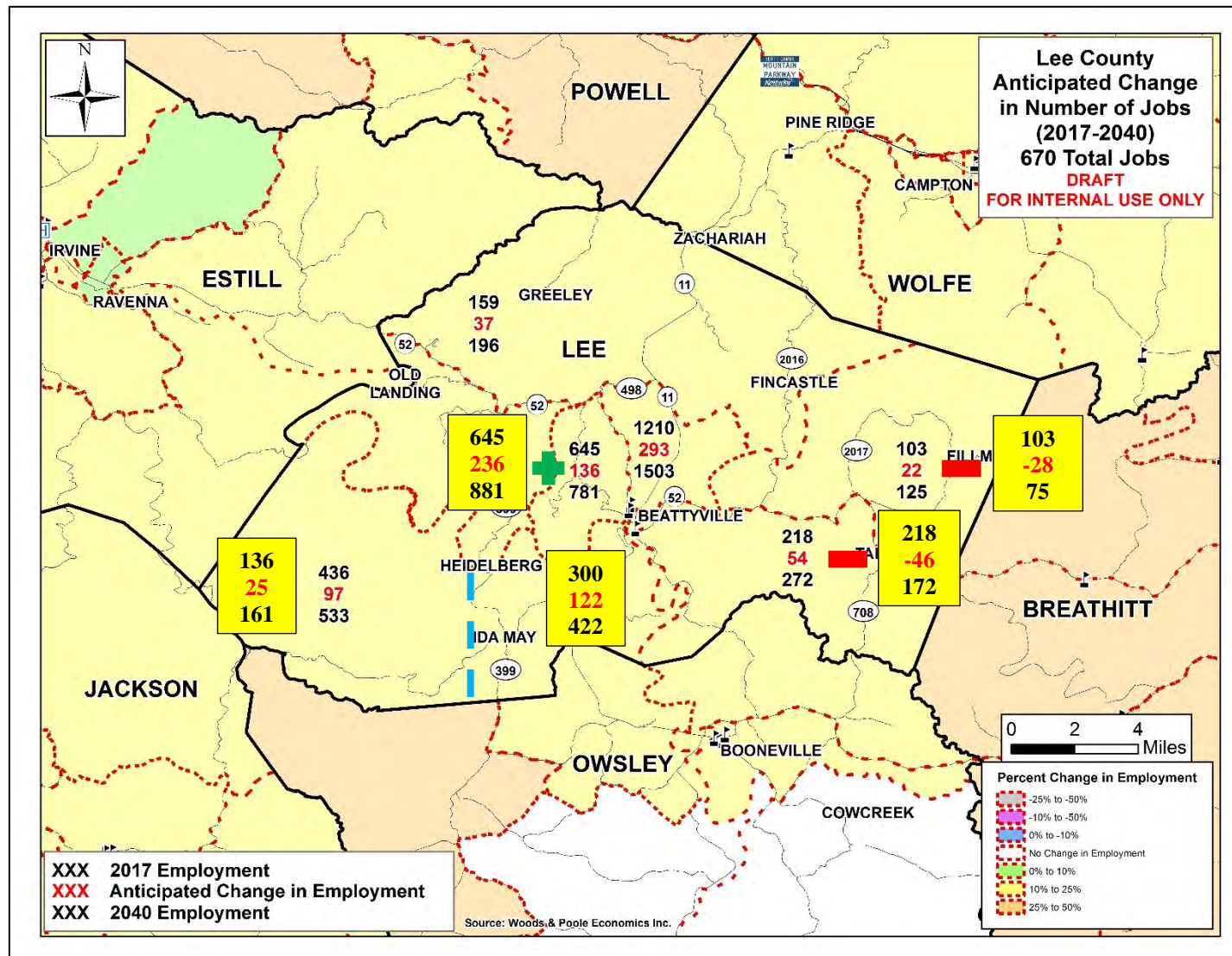


Figure 2: Lee County Anticipated Change in Number of Jobs (2017-2040)

3. Where is Lee County growing? A map from the KYSTM showing the change in population projections between 2017 and 2040 was presented to help with the group exercise. It was noted that these projections come from the Kentucky State Data Center and show the county's population decreasing by 539 people by 2040. The map is shown in **Figure 3** and includes changes (boxed in yellow) recommended by Judge Smith.
 - Apartments and affordable housing is being constructed in Beattyville. Expect the population in Beattyville to increase.
 - Population outside of Beattyville expected to decrease.

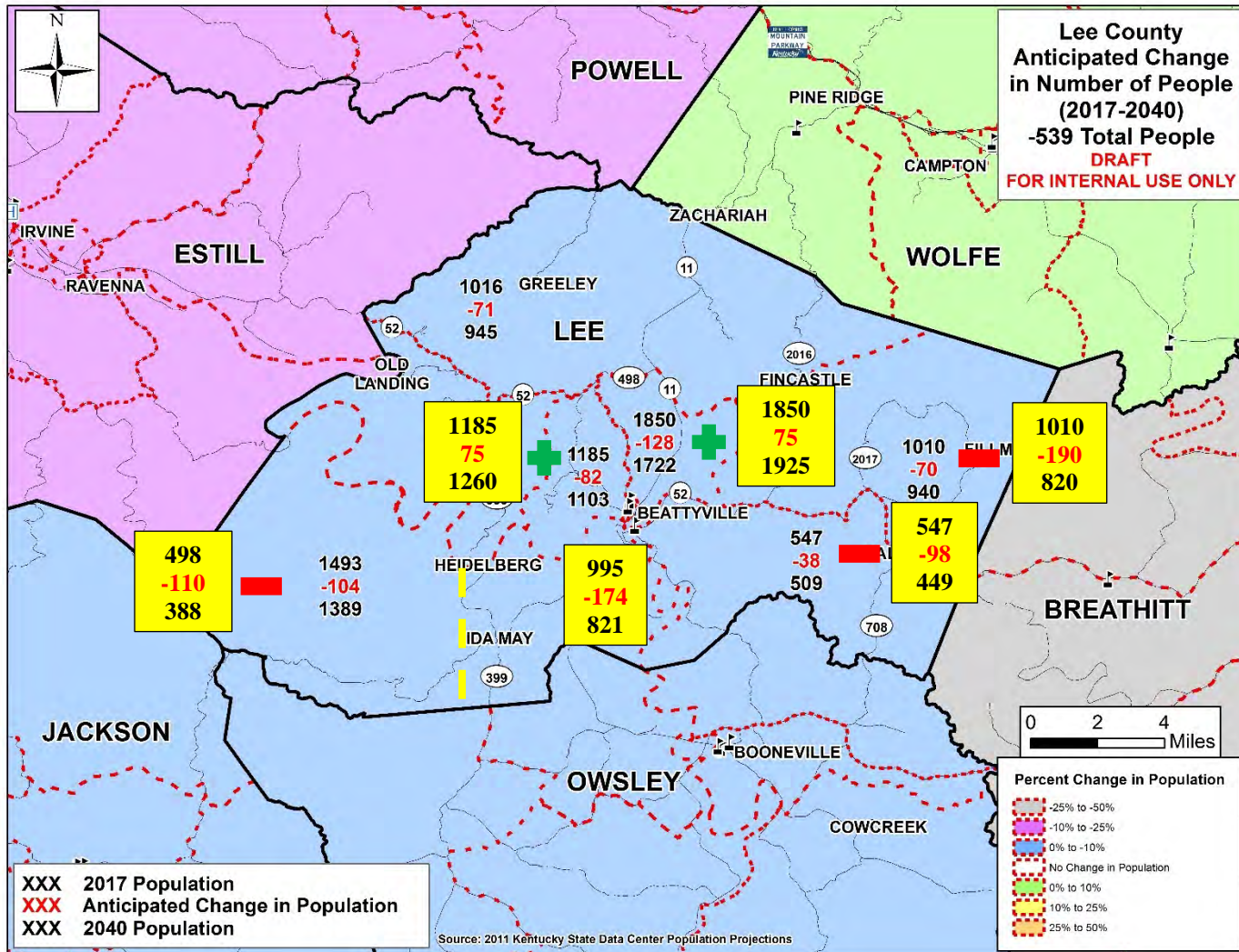


Figure 3: Lee County Anticipated Change in Number of People (2017-2040)

4. What transportation issues are preventing people from getting where they want to go and preventing the county from growing?
 - A need to complete the KY 30 corridor was the main point of focus.
 - Widening KY 11 south by the Lee County Elementary School was the next priority.
 - New alignment at Hat Holler Hill would give a safer and more direct route to Richmond.
 - The main concern industries have about moving to Lee County is the lack of a reliable drug-free workforce.

5. Brian and Jason Blackburn ended the meeting with a discussion of the project schedule and next steps. This is the last county meeting. The next step will be for the project team to compile the information received from all District 10 Counties. The study process and results will then be presented for feedback to all District 10 Counties at a final “wrap-up” meeting in Spring 2018. The final report will be published in Summer 2018.

The meeting ended at approximately 11:00 a.m. EDT.